



# Perfect Effects

## User Manual

Copyright ©2007-2014 onOne Software, Inc. All Rights Reserved.

# Table of Contents

<b>Chapter 1: Welcome to Perfect Effects</b>	1
<b>Chapter 2: Introduction</b>	2
Using the Help System	3
Contacting onOne Software	4
Additional Help	5
System Requirements	6
Installation	7
Licensing and Registration	8
Opening and Saving Files	9
Using Modules	11
Using as Standalone	12
Using with Adobe Photoshop	13
Using with Adobe Lightroom	15
Using with Apple Aperture	18
Using with Other Applications	19
Managing Extras	20
Preferences	24
<b>Chapter 3: Browse Module</b>	26
Getting Started	27
Browse Workspace	28
Finding and Opening Files	29
Using the Browse Module	30
Using the Info Pane	31
Navigating Sources	32
Navigating Folders	33
Navigating Recent Pane	34
Working in Thumbnail View	35
Working in Detail View	36
Navigating the Preview	37
Navigator	38
Managing Files and Folders	39
Opening an Image	40
Menus	41
Keyboard Shortcuts	43
<b>Chapter 4: Perfect Effects</b>	44
Getting Started	45
User Interface	46
Navigating the Preview	47
Navigator, Loupe, Histogram and Info	48
Preview Window Modes	50
Using Perfect Effects	51

Browsing Filters .....	52
Using the Filter Stack .....	55
Using Filters .....	58
Using the Masking Tools .....	72
Mask Modes .....	73
Using the Masking Brush .....	74
Using the Masking Bug .....	77
Presets .....	79
Menus .....	
Keyboard Shortcuts .....	83
<b>Chapter 5: Index .....</b>	<b>85</b>

## Welcome to Perfect Effects



Bring out the "WOW" in your images with the transformative power of Perfect Effects 8. Its extensive library of one-click presets, adjustable filters, and powerful tools make it easy to bring out the best in your image. Get stunning results instantly or take complete creative control as you add subtle to striking enhancement to your image, create a vision that you have in your mind's eye, or immerse yourself in freeform creativity. With Perfect Effects 8, you can do it all.

# Introduction

This introductory chapter includes general helpful information about how to use this help system, how to contact onOne Software, how to install and access the software, etc. It covers many of the foundation topics that you will need to understand to get started.

### Pages in this Section

- [Using the Help System](#)
- [Contacting onOne Software](#)
- [Additional Help](#)
- [System Requirements](#)
- [Installation](#)
- [Licensing and Registration](#)
- [Opening and Saving Files](#)
- [Using Modules](#)
- [Using as Standalone](#)
- [Using with Adobe Photoshop](#)
- [Using with Adobe Lightroom](#)
- [Using with Apple Aperture](#)
- [Using with Other Applications](#)
- [Managing Extras](#)
- [Preferences](#)

## Using the Help System

This user guide is html based and readable in most web browsers. On the left side, you will see a table of contents that make it easy to find the section you are looking for. The table of contents is hyperlinked and will take you to the specified section by clicking on them. The main body of the page will show you the content you have requested. Use the scroll-bar at the right to scroll down for additional content. You may see hyperlinks in the body text. They will be blue and underlined. Clicking on one of these hyperlinks will take you to more relevant information.

You use the same forward and back buttons in your browser to navigate this user guide as you would a regular web page. You can even bookmark pages so you can find them quickly later.

If you don't see what you are looking for in the table of contents, try the search field at the upper right. You can type in what you are looking for and an index of pages will be created automatically that contain your search term.

### Printing the Manual

You can print individual pages by pressing the Print button at the top of the page. A complete printable PDF version of this user guide is available in the [user guide section](#) of the onOne website. This version may be downloaded and viewed when you do not have an internet connection. The PDF version may also be installed on your tablet or eReader device for viewing off our computer.

## Contacting onOne Software

At onOne Software, we value our customers and offer a variety of ways to be contacted.

- Visit our company website at:  
[www.onOnesoftware.com](http://www.onOnesoftware.com)
- For technical support please visit:  
[www.onOnesoftware.com/support](http://www.onOnesoftware.com/support)



**onOne Software, Inc.**

15333 SW Sequoia Parkway Suite 150  
Portland, OR 97224  
Telephone: 503-968-1468  
Fax: 503-968-1469

© 2007-2014 onOne Software, Inc. All rights reserved. onOne Software is a registered trademark of onOne Software, Inc. The onOne Software logo are trademarks of onOne Software, Inc. Adobe, Photoshop, Photoshop Elements, Lightroom are either registered trademarks or trademarks of Adobe Systems, Incorporated in the United States and/or other countries. Mac OSX, the Mac logo, iPhoto and Aperture are trademarks of Apple, Inc., registered in the U.S. and other countries. Microsoft, Windows 7, Windows 8 are registered trademarks of Microsoft Corporation. All other trademarks are the property of their respective owners. The activation system used by onOne Software, Inc. is licensed under Patent No. 5,490,216. For a full list of license disclosures view the LICENSE.TXT file installed with the software.

## Additional Help



### Technical Support

Contact technical support at [www.ononesoftware.com/support](http://www.ononesoftware.com/support) or by filling out a [request form](#).



### Knowledge Base

Search the [Knowledge Base](#) for common issues, tips & tricks, and compatibility questions.



### Frequently Asked Questions

Check the list of [Hot Topics](#) on the onOne web site. This covers the most frequently asked questions.



### Video Tutorials

Visit the onOne University for free [online video tutorials](#) and archived webinars. Many users find these to be the best and fastest way to get started and learn new techniques.



## System Requirements

	Minimum	Recommended
Operating System	Mac OSX 10.7, 10.8, 10.9 Windows Windows 7 or Windows 8 current maintenance releases, 64 bit only	Mac OSX 10.8, 10.9 Windows Windows 7 or Windows 8 current maintenance releases, 64 bit
Processor	Intel Core 2 Duo, Xeon or better processor(s)	Quad-core Intel Core i5, Xeon or better processors(s)
RAM	8 GB RAM	8+ GB RAM
Hard Drive	1 GB for installation	1 GB for installation Fast 7200 RPM or SSD drives
Display	OpenGL 2.0 compatible video card with 256 MB dedicated video RAM, 1280x720 resolution	OpenGL 4.0 compatible video card with 1GB dedicated video RAM, 1920x1080 resolution
Optional Application Integration	Photoshop CS5, CS6, CC, CC 2014 Photoshop Elements 10, 11, 12 Photoshop Lightroom 4, 5 Apple Aperture 3.4	Photoshop CS6, CC, CC 2014 Photoshop Elements 11, 12 Photoshop Lightroom 5 Apple Aperture 3.4
Other	Internet connection for activation, auto update checking, content downloads and tutorials. Adobe Flash Player	Wacom tablet for pressure sensitive input Hardware display calibration tool

### About Windows Video Cards

If you are using Perfect Effects from a Windows based computer, it is important that you have the latest drivers for your video card installed to get the best performance. Check with your video card manufactures website for the latest drivers. Be sure your video card is OpenGL 2 compliant and has 256MB or more of dedicated VRAM. Many integrated video cards on low-end laptops may not meet these requirements.

## Installation

To install Perfect Effects, double click the installer icon and allow the installer to guide you. You may have downloaded the installer from the onOne Software website or it may be on a DVD if you elected for a physical shipment.



You should close any supported host applications such as Photoshop, Lightroom or Aperture as well as any standalone versions of onOne products before installing or updating.

### Mac OSX

- The application is installed in the Perfect Effects folder in the Applications folder.
- All plug-in files for supported host applications (such as Photoshop, Lightroom, Aperture, and Photoshop Elements) found during the installation process will be installed automatically. You will see a summary of installed plug-ins at the end of installation.
- If a previous versions of Perfect Effects is found, it will be maintained or replaced based on your preference during installation.
- Support files are installed into /Library/Application Support/ and ~/Library/Application Support/ folder.

### Windows

- The application is installed in the Perfect Effects directory in the onOne Software directory in the Program Files directory.
- All plug-in files for supported host applications (such as Photoshop, Lightroom, Aperture, and Photoshop Elements) found during the installation process will be installed automatically. You will see a summary of installed plug-ins at the end of installation.
- If a previous versions of Perfect Effects is found, it will be maintained or replaced based on your preference during installation.
- Support files are installed into \ProgramData\onOne Software\.

## Uninstalling

To uninstall Perfect Effects, follow these instructions.



You should deactivate your product before uninstalling. This will allow you to transfer your license to another computer.

### Mac OSX

1. Go to the Applications/Perfect Effects/Documentation folder.
2. Double click on the Remove Perfect Effects application.

### Windows

1. Go to Control Panels.
2. Under Programs select Uninstall a program.
3. In the list that comes up select Perfect Effects and then click on the Uninstall button.

## Licensing and Registration

Perfect Effects will operate as a trial version for 30 days from when it is installed. If you have purchased Perfect Effects, you will want to license it so you can continue to use it past the trial period. When you install Perfect Effects it will prompt you to license it. Simply click on the license button and enter your license code. Your license code can be found in your order confirmation email if you purchased the download version directly from onOne Software. If you purchased a physical copy of Perfect Effects, a sticker on the information card will have the license code on it. Your license code allows you to install Perfect Effects on two computers. When you enter your license code, Perfect Effects communicates with the onOne activation server and will activate your software. Your software must be licensed and activated to function past the trial period. If the computer you are activating does not have access to the internet, you can manually activate your software by following the manual activation instructions in the license dialog.

If you wish to move your copy of Perfect Effects from one activated computer to new computer you will need to deactivate it first. Deactivation is a simple process. Simply open Perfect Effects and select Deactivate from the Help menu. This will deactivate Perfect Effects on the current machine, allowing you to install and activate it on another machine.

If you lose your activation code, have your computer stolen and can not deactivate it, need to install on more than two computers or have other activation issues please contact onOne customer service at 1-888-968-1468 or visit the [support section of the onOne software website](#).

It is important to register your copy of Perfect Effects if you did not purchase it directly from onOne Software, so we can provide you with the best possible service. Registered users of Perfect Effects are eligible for free technical support, information regarding new versions and products, free updates, upgrade pricing and special offers on new products.

### Product Improvement Program

We believe that the best products are made by listening to our customers. We use many methods to gather your ideas and feedback including: emails, surveys, direct conversations, market analysis and the Product Improvement Program. The Product Improvement Program is built into our software and gathers information about how our software is used. It is the most accurate way for us learn what features are important to you and how our products fit into your workflow.

Enrollment in the program is voluntary. When you participate, we collect basic information about how you use our programs and basic information about your computer. This information helps us learn what features are important to you and how we can make our software easier to use. No personal information is collected and you will not be contacted.

You can choose to participate in the Product Improvement Program the first time you launch an onOne product. You can change your participation later, just click the Help menu, then Help Improve onOne Products.

You can learn more about the Product Improvement Program [here](#).

## Opening and Saving Files

### Supported File Types

Perfect Effects uses the Photoshop (PSD) file format as its default file type. The Photoshop file format is a commonly supported, publicly documented file format that is also the standard file for Adobe Photoshop. It is also supported by Photoshop Elements, Lightroom, Aperture and many other image editing applications. It supports multilayered images and layer masks making it the perfect format for durable, adjustable imaging. Perfect Effects also supports the opening and saving of the following file types, in RGB either 8 or 16 bits per pixel.

- Photoshop (PSD)
- Photoshop Large Document (PSB)
- Tagged Image File Format TIFF (TIF)
- Joint Photographic Experts Group JPEG (JPG)
- Portable Network Graphic (PNG)
- Camera Raw files from over 200 digital cameras

Photoshop PSD files will maintain all the layers and layer masks you create in Perfect Effects and are recommended as your main file format. If your saved file will be larger than 2 GB or 30,000 pixels on a side, your image will automatically be saved in the .PSB or Large Document format. This is a newer version of the PSD file format and still maintains all your layers and masks.

You can use the Edit a Copy or Save As command to save flattened TIF and JPG files or PNG files with transparency. Camera raw files can only be opened, not saved directly. They must be saved as another file type.

### Opening Files

You may open an existing file in several ways.

1. Selecting a file(s) in the Browse module, then clicking on another module, like Layers or Effects.
2. Open the file from the File > Open menu if you are using the Layers module.
3. Dragging a file onto the Perfect Effects icon.
4. Sending a file to Perfect Effects from a host application like Photoshop or Lightroom using the Perfect Effects plug-in.



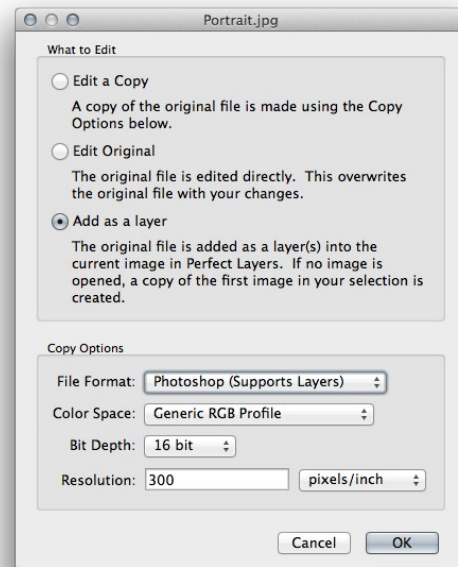
When opening an existing PSD file that has been editing in Photoshop it may contain unsupported layer types such as text layers, adjustment layers, etc. you will see a warning. You can still open a flattened version of the image if this happens. You can [learn more here](#).

### Opening Options

When you open a file(s) in the standalone application you will be presented with the dialog to the right. It allows you to choose to work on the original file, a copy, or to stack the files together as layers.

- **Edit a Copy:** A copy of the original file is made using the Copy Options below and saved in the same folder as the original.
- **Edit Original:** The original file is edited directly. This overwrites the original file with your changes. This option is disabled for Raw or read-only files.
- **Add as a Layer:** The original file is added as a layer(s) into the current image in Perfect Layers. If no image is opened, a copy of the first image in your selection is created.

If you select to open a copy, you can control the file type, color space, bit-depth and resolution. If you have multiple files selected, they will all be handled the same way.



### Saving Files

1. You may save the open file using the save option command in the Layers module anytime.
2. If you opened your image from the Browse module, simply return to Browse to save and close the file.
3. If you have accessed Perfect Effects using a plug-in from another application, follow the instructions from that application for saving.

## Using Modules

Perfect Effects is a complete photo editor. It uses a modular approach, allowing each module to focus on one task. This makes accomplishing the task easier by removing unnecessary tools and giving access to just what you need to get the task done. When used as a standalone application, Browse is the default module upon first launch, it is used to navigate your drives and cloud services to find images to begin working. In the Preferences you may change the default startup module to Perfect Layers. If you prefer a layered workflow you can use the Layers module as the heart of your workflow, similar to using Adobe Photoshop. Depending on how you access Perfect Effects you may never notice Browse or Layers.

### The Module Selector

If you access Perfect Effects as a standalone application you will start in Browse or Layers module.

When you are ready to edit an image you will select the module you wish to use from the Module Selector in the upper right corner of the main window. You can easily switch between modules by clicking on another in the Module Selector. This allows you to perform multiple tasks during the same editing session.

When you have completed your work, you return the Perfect Layers module to save your work.

If you access Perfect Effects as a Photoshop Plug-in you see the Module selector, but it will be disabled, you can only use one module at a time through Photoshop. The Module Selector will also be disabled if you use the following modules through Lightroom or Aperture:

- Perfect Portrait
- Perfect Effects
- Perfect B&W
- Perfect Enhance
- Perfect Resize

When you access these modules, you use them on their own and then return back to Lightroom or Aperture directly. Your file will be saved and closed automatically. If you access Layers or Mask through Lightroom or Aperture you will start in the Layers module.



This is the module selector from the Perfect Photo Suite. It contains all of the available modules that onOne Software makes. If you have purchased a single product, you will only see that product module and Perfect Layers in your module selector.



If you want to have access to all your modules during an editing session from Lightroom or Aperture, select the Perfect Layers plug-in. This will start you in Perfect Layers and the Module Selector will be visible, allowing you to access all of the installed modules.

## Using as Standalone

Perfect Effects can be used as a standalone application without the need of Photoshop, Lightroom or other host application. To launch it follow these steps:

### Mac OSX

1. Open your Hard Drive.
2. Navigate to the Applications folder.
3. Navigate to the Perfect Effects folder.
4. Double click on the Perfect Effects application icon.

You can add Perfect Effects to your dock for easy access by clicking and holding the icon in the dock, then select the Keep In Dock option. If you use Launchpad it can be found there as well.

### Windows 7

1. Go to your Start Menu.
2. Select the onOne Software group.
3. Select Perfect Effects.

If you selected the "Add Icon to Desktop" option during installation you can also access Perfect Effects from there.

### Windows 8

1. Open the Start screen by pressing the Window key.
2. Select Perfect Effects.

If you selected the "Add Icon to Desktop" option during installation you can also access Perfect Effects from there.

## Using with Adobe® Photoshop®

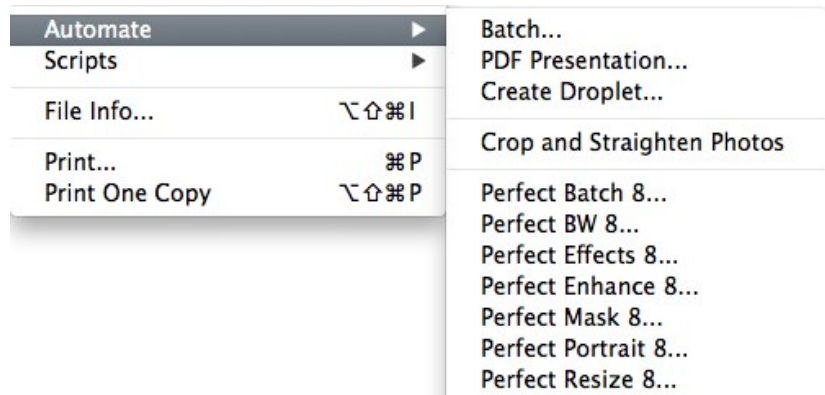


If you have the Premium Edition of Perfect Effects, you can access it as a plug-in through Adobe® Photoshop® or Photoshop® Elements®. This includes the onOne panel for Photoshop for fast access to plug-ins and their presets. As a Photoshop plug-in you can use modules in the Photoshop workflow. This includes using selections and masks as well as Smart Objects and Smart Filters. You can also record actions for automating and batch processing.

If you do not have the Premium Edition of Perfect Effects and would like to use it inside of Photoshop, contact onOne Customer Service about upgrading to the Premium Edition.

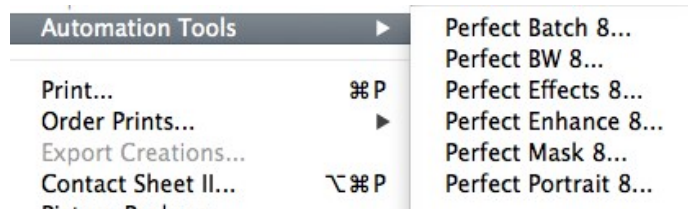
To use Perfect Effects inside of Adobe Photoshop follow these steps:

1. Open the image you want to work on.
2. Select the layer you want to work on.  
Generally Perfect Effects works on a copy of your selected layer, not the entire image.
3. From the File menu, select Automate, and then the module you would like to use.



To use Perfect Effects inside of Adobe Photoshop Elements, follow these steps:

1. Open the image you want to work on.
2. Select the layer you want to work on.  
Generally Perfect Effects works on a copy of your selected layer, not the entire image.
3. From the File menu, select Automation Tools, and then the module you would like to use.



Perfect Layers and Browse are not accessible from Adobe Photoshop or Photoshop Elements.



You can use the for Adobe Lightroom and Apple Aperture Edition inside of Adobe Photoshop Elements as well.

### onOne Panel



Users of Adobe Photoshop CS5 and higher can also access Perfect Effects as plug-ins using the onOne Extension Panel. This provides fast access to the Perfect Effects and its presets. To access the onOne panel, go the Window > Extensions menu in Photoshop and select **onOne**.

The onOne panel behaves just like any other panel in Photoshop. It can be minimized or nested with other panels. To access a module, simple double-click on it. To use a preset, single click on the module name. A menu of available presets will be displayed. Simply double-click on one to apply it to your selected layer.



If you wish to record actions using Perfect Effects be sure to access it from the File > Automate menu when recording.



## Using with Adobe® Lightroom®



If you have the Premium or for Adobe® Lightroom® & Apple® Aperture® version of Perfect Effects you can access Perfect Effects as a plug-in inside of Lightroom. This provides an integrated, round-trip workflow.

Perfect Effects is the perfect companion for Adobe Photoshop Lightroom. It integrates tightly with it and provides a seamless experience for enhancing your images. There are several ways to use Perfect Effects with Lightroom.

### Plug-In Extras

Perfect Effects can be accessed from the File > Plug-in Extras menu. This is the preferred way to access it. It gives you access to all installed modules and has the most flexibility in how the files are handled. To edit an image in Perfect Effects follow these steps.

1. Select the image in Lightroom.
2. Go the File menu and select the Plug-In Extras flyout.
3. Select the module you would like to use.

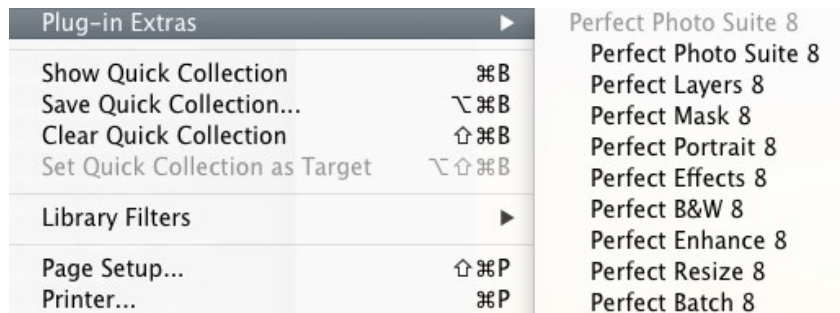
When you access Perfect Effects as a plug-in from Lightroom the module selector is only available for Perfect Layers or Perfect Mask. When you select one of these modules you can use as many modules as you desire during the same editing session. At the end of the editing session you must save and close the image from the Perfect Layers module.

When you select a module other than Perfect Layers or Perfect Mask your image will be sent to it directly and when you press Apply, the image is saved and closed automatically and you are returned back to Lightroom.

#### Selecting Multiple Images

If you have multiple images selected, the behavior varies depending on which modules you select.

- Perfect Layers or Perfect Mask: Each file will be opened in its own tab. Then you may access any modules available in the Module Selector.
- All other plug-ins: Each image is opened in turn and you may adjust the settings on an image by image basis.



### Lightroom Plug-in Preferences

When you use Perfect Effects through the Plug-In Extras menu there are important file handling options that are controlled in the Preferences dialog of the Perfect Layers module. These need to be configured in advance based on your desired workflow.

**File Type:** The file type drop-down menu determines what type of file will be created. The default is PSD, which maintains layers. You can also select JPG or TIF if you prefer those formats and are not concerned about maintaining layers. The last option is same as source, which maintains the file type of the original file, except for Camera raw files which are saved as PSD.

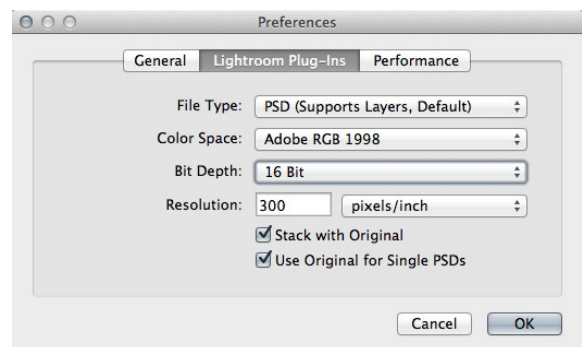
**Color Space:** The color space drop-down menu determines what RGB working color space is used: Adobe RGB 1998, sRGB or ProPhotoRGB.

**Bit Depth:** The bit-depth drop-down menu determines the bit depth, either 8-bit or 16-bit per pixel.

**Resolution:** The resolution drop-down menu determines the resolution of the file.

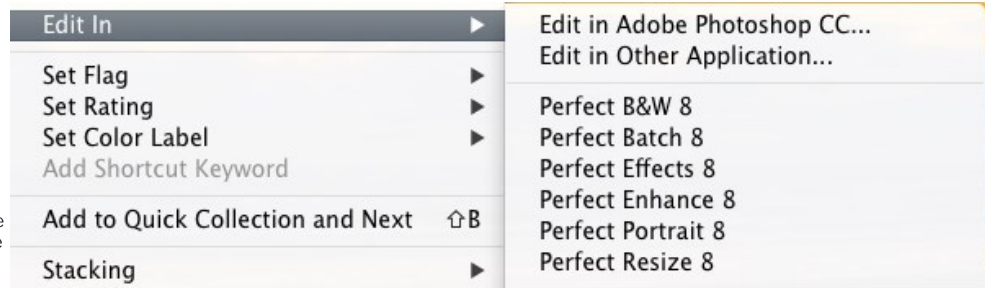
**Stack with Original:** When enabled, the new image is stacked with the original image, making it easier to organize.

**Use Original for Single PSDs:** When enabled, if you select a single PSD file, it will be edited directly, rather than having a copy made.



### External Editor

You can also access modules as external editors for all modules except Perfect Layers or Perfect Mask. You can access them from the Edit In... contextual menu. These behave similarly to the plug-ins in the Plug-In Extras menu but ignore the preferences set in Perfect Layers. Instead you have the option to control a subset of these options each time you access a module, in the same way you do when you access Photoshop or any other external editor.



## Batch Processing

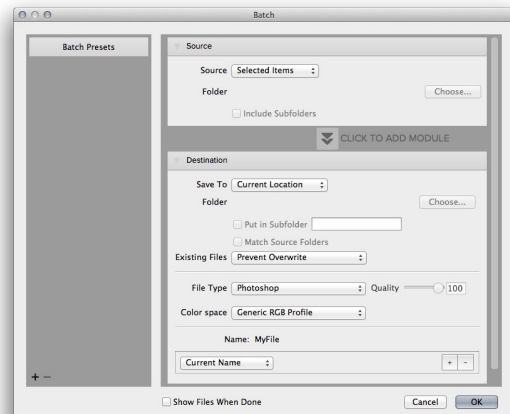
There are two ways to batch process multiple images in Lightroom with Perfect Effects.

### Perfect Batch

Perfect Batch is the preferred way to batch process. You start with a selection of images in Lightroom or folder on disk, then batch-process them with multiple modules at the same time to solve complex workflows. For example a portrait photographer can prepare images for a sales session by retouching every face, adding their stylized look and output small JPGs with their logo watermark, all in the same batch process. You can access Perfect Batch from the File > Plug-In Extras menu in Lightroom. You can learn more about using in the Perfect Batch section of this user guide.

Key batch processing features include:

- Start with a selection of images from Lightroom or any folder you select.
- Batch process with a single module for simple jobs or create workflows where you string multiple modules together.
- Save workflows to use over and over.
- Pause on the first image to confirm your set-up, then automatically process the rest to match.
- Add a visual watermark, like your logo, to every image.
- Edit files in place or create new files with different size, name or file type.



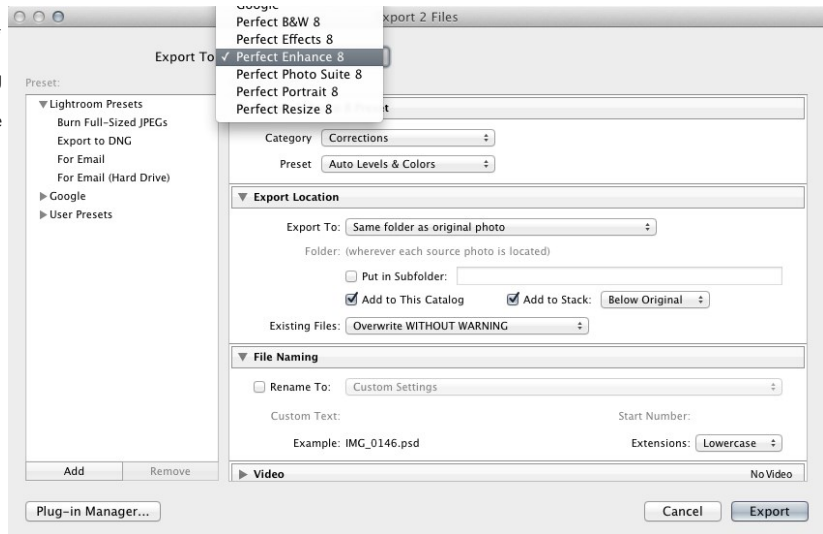
## Lightroom Export

You can also batch process with a single module through the Export menu in Lightroom. This is useful if you need to remove metadata or are more comfortable with Lightroom's Export. Batch processing through Export is driven by presets, so you need to create a preset that accomplishes the work you desire first.

1. Select the images you wish to batch process.
2. Go the Export under the File menu.
3. At the top under the Export to drop-down, select the module to use.
4. Complete the module specific options below. These will start with the preset, followed by options for selecting the export location, file naming, file size, etc.
5. Press the export button.



**You cannot save Lightroom export presets or use the Export with Previous option.**



## Using with Apple® Aperture®



If you have the Premium or for Adobe® Lightroom® & Apple® Aperture® Edition of Perfect Effects you can access Perfect Effects as a plug-in inside of Aperture. This provides an integrated, round-trip workflow.

Perfect Effects integrates tightly with Apple Aperture and provides a seamless experience for enhancing your images.

Perfect Effects can be accessed from the Photo > Edit with Plug-In menu. To edit an image in Perfect Effects follow these steps.

1. Select the image in Aperture.
2. Go the Photo menu and select the Edit with Plug-In flyout.
3. Select the module you would like to use.

When you access Perfect Effects as a plug-in from Aperture the module selector is only available for Perfect Layers or Perfect Mask. When you select one of these modules you can use as many modules as you desire during the same editing session. At the end of the editing session you must save and close the image from the Perfect Layers module.

When you select a module other than Perfect Layers or Perfect Mask your image will be sent to it directly and when you press Apply, the image is saved and closed automatically and you are returned back to Aperture.

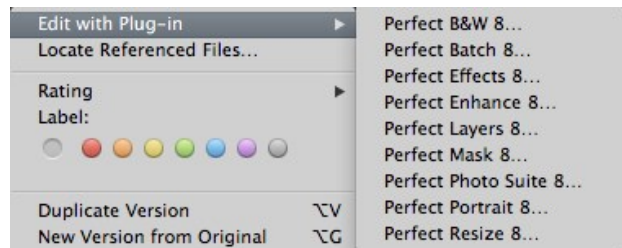
### Selecting Multiple Images

If you have multiple images selected, the behavior varies depending on which modules you select.

- Perfect Layers or Perfect Mask: Multiple images will be opened in separate tabs.
- All other plug-ins: Each image will open in a series so you can adjust the settings on each image.



The file type, bit-depth and color space of the image is determined by the preferences in Aperture for external editors. Perfect Effects will maintain the file type, either PSD or TIF automatically to support compatibility with plug-ins from other manufacturers. Keep in mind only PSD files store re-editable layers and mask.

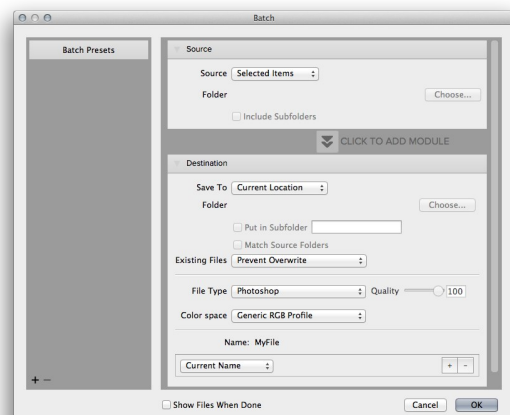


### Batch Processing

Perfect Batch is the preferred way to batch process. You start with a selection of images in Aperture or folder on disk, then batch-process them with multiple modules at the same time to solve complex workflows. For example a portrait photographer can prepare images for a sales session by retouching every face, adding their stylized look and output small JPGs with their logo watermark, all in the same batch process. You can access Perfect Batch from the Photo > Edit with Plug-in menu in Lightroom. You can learn more about using in the Perfect Batch section of this user guide.

Key batch processing features include:

- Start with a selection of images from Lightroom or any folder you select.
- Batch process with a single module for simple jobs or create workflows where you string multiple modules together.
- Save workflows to use over and over.
- Pause on the first image to confirm your set-up, then automatically process the rest to match.
- Add a visual watermark, like your logo, to every image.
- Edit files in place or create new files with different size, name or file type.



## Using with Other Applications

You can use Perfect Effects as an external editor with many other workflow applications such as Adobe Bridge or Apple iPhoto. First check the application user guide to see if it supports external editors. It should detail how to configure the host application to use an external editor. Generally this will include selecting Perfect Effects setting the file type to send to it. It is best to use PSD files if supported. Below are the instructions for configuring iPhoto.

1. Open the Preferences dialog, from the iPhoto menu.
2. Click on the Advanced tab.
3. From the Edit Photos: pop-up select the In Application... option (note if you have ever selected another external editor, it may be listed here instead.)
4. From the Choose dialog that appears, navigate the the Perfect Effects folder, inside the Applications folder and select [Product Name].
5. In the RAW Photos: option, uncheck the Use RAW when using external editor option, and check the Save edits as 16-bit TIFF files option .



## Managing Extras

### What are Extras?

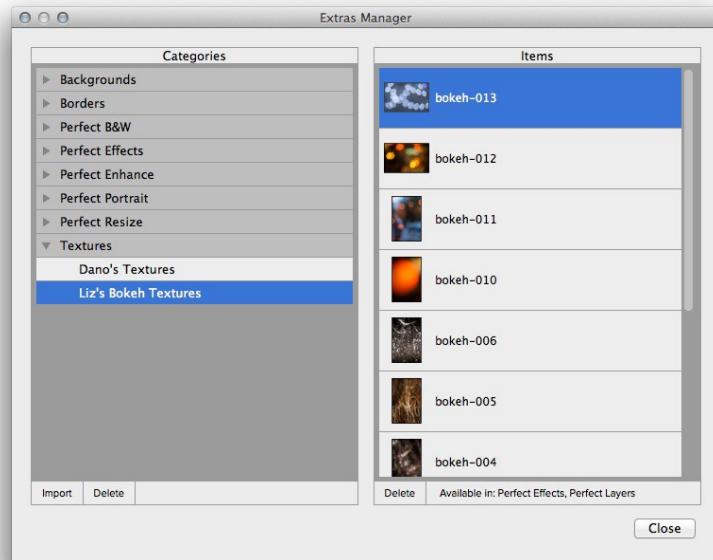
The Extras Manager lets you import and manage your own Extras content. Extras are:

- Backgrounds that can be imported and used in Perfect Layers.
- Borders that can be imported and used in Perfect Layers, Perfect Effects and Perfect B&W.
- Textures that can be imported and used in Perfect Layers and Perfect Effects.
- Presets for Perfect B&W, Perfect Effects, Perfect Enhance, Perfect Portrait and Perfect Resize.

Extras can be content that you download from the onOne website or content that you create on your own.

The Extras manager lets you create categories for each Extra type, import files as extras and delete user-added extras you no longer want.

You can access the Extras Manager from the File menu in Browse and Perfect Layers or the Preset menu in modules that use presets.



### How to Import Extras

Importing extras is simple. Start by opening the Extras Manager then follow these steps.

1. Select the type of extras you wish to import in the left column (Backgrounds, Borders, etc.) You can only import extras of one type at a time.
2. Click on the Import button in the footer of the left column. A Finder or Explorer Window will appear where you can select the files to import. If you want to import an entire folder, click into the folder then select the first file, then shift-click on the last file. Click import when your selection is complete.
3. Select a category for your extras to live in. This is where you will be able to find it inside of the Perfect Effects. You can select from an existing category or create a new one.

When your extras have been imported you will see them in the Extras Manager in the category you selected, in the type of extra they belong to.

### What Type of Images Can I Import as Extras?

Backgrounds and Textures may be any image file that Perfect Effects can open including jpg, tif, raw or psd files. Border files must have a large central area that is transparent. This means that only files that support transparency like png can be imported as borders.

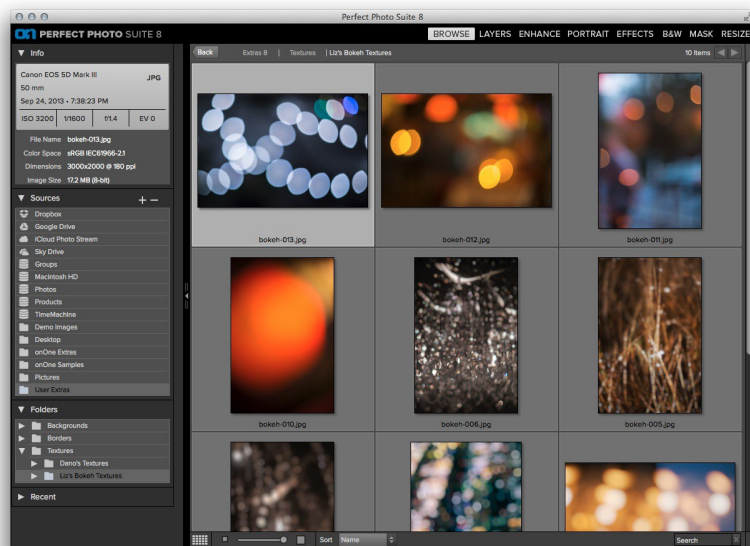


If you have a .ONPreset file that you have downloaded from the onOne Software website, simply double-click on it to install it. There is no need to import it through the Extras Manager.

## Browsing Extras

You can browse and open Extras from the Browse module. In the Sources pane there are sources for onOne Extras (extras that are provided by onOne when you installed Perfect Effects) and User Extras where you can browse and open extras you have installed.

Inside each source folder are folders for the Backgrounds, Borders and Textures. You can open these as layers into Perfect Layers to add them to an image or layout you are working on.



## Using Extras in Perfect Layers

Browsing extras in Perfect Layers is similar to the Browse module. Click on the Extras tab of the left column mini-browser. You will see top-level folders for onOne Extras and User Extras. Inside of these will be sub-folders for Backgrounds, Borders and Textures. You can double-click on an extra to add it to your current image, just use the "Add as a Layer" option when asked how you want to open the file.

- Then you can use the transform tool to size and position the extra on your image.
- Use the Layers pane to change the order, opacity and blending mode.
- Use the Masking Brush and Masking Bug to selectively apply the extra.
- Use the Perfect Eraser to remove distractions from the extra if needed.

If you save your file as a layered PSD file, you can always re-open the file again and have access to all of the layers and masks for further editing.

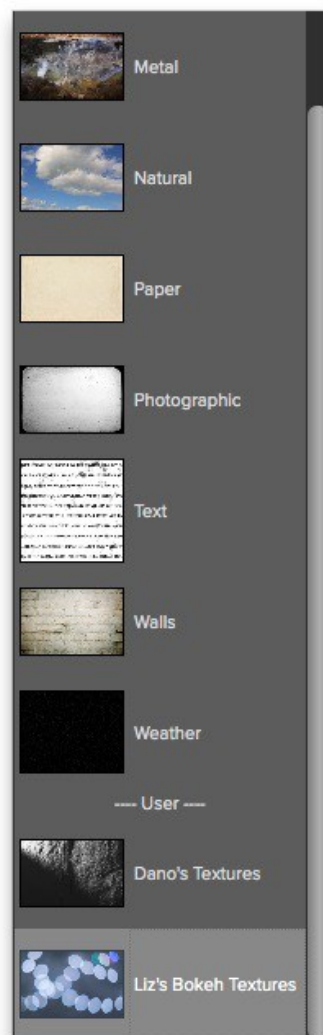
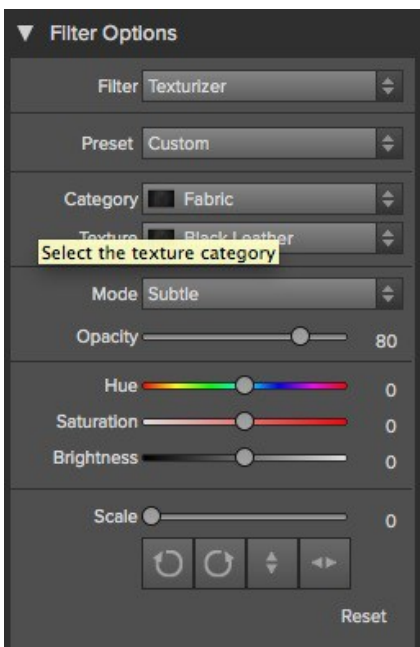




### How to use in a Module

You can access certain extras, like borders and textures, inside of modules like Perfect Effects and Perfect B&W. To use them follow these steps:

1. Open an image into Perfect Effects.
2. In the Filter Options pane, select the correct filter type, either Borders or Texturizer.
3. From the Category pop-up, select a category you have imported. User added extras categories appear at the bottom of the category list.
4. From the Texture pop-up select a texture from the category you selected.



### How to Delete Extras

You can remove imported extras using the Extras Manager. Follow these steps:

1. Open the Extras Manager.
2. Click on the extras type that contains the content you wish to remove. This will display categories within that extras type.
3. To delete an entire category, select in the left column and click on Delete button in the footer of the left column.
4. To delete individual extras, select them in the right column and click on the Delete button in the footer of the right column.



Deleting extras is permanent and can not be undone!

### See also

[Using the Help System](#)  
[Contacting onOne Software](#)  
[Additional Help](#)  
[System Requirements](#)  
[Installation](#)  
[Licensing and Registration](#)  
[Opening and Saving Files](#)  
[Using Modules](#)  
[Using as Standalone](#)  
[Using with Adobe Photoshop](#)  
[Using with Adobe Lightroom](#)  
[Using with Apple Aperture](#)

Using with Other Applications  
Preferences

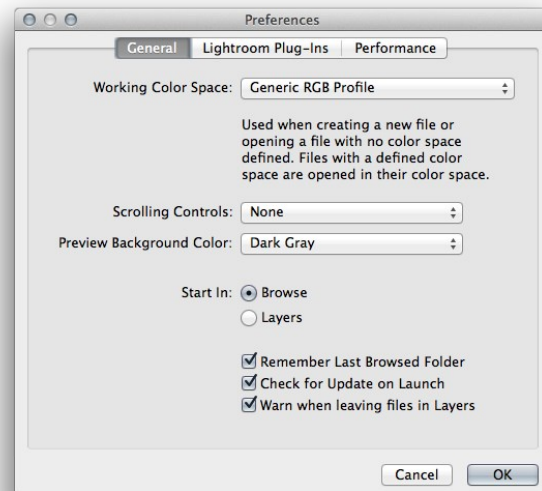
## Preferences

The preferences dialog contains general application settings. The preferences are accessed from the Perfect Effects menu on Mac or the Edit menu on Windows.

The preferences contain the following controls:

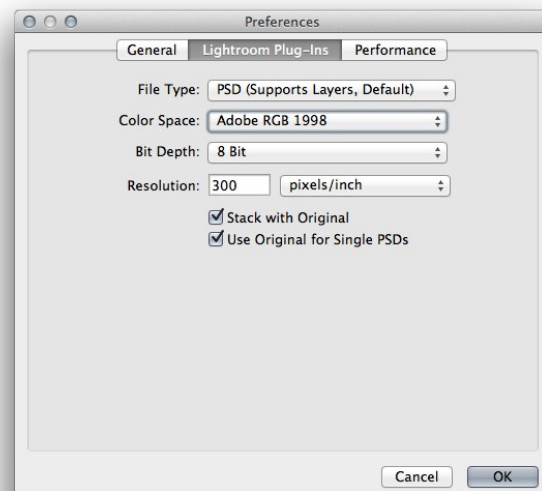
### General Settings

1. **Working Color Space:** When a new file is created or file is opened and has no color profile associated with it, this is the assumed color profile for the image. Images that come from other hosts or have tagged or embedded profiles will use the associated profile instead.
2. **Scrolling Controls:** Lets you select how the mouse scroll wheel or scrolling gesture works. The options are:
  1. **None:** Default
  2. **Preview Zoom:** Adjusts the zoom of the preview window. Scrolling up increases the zoom, scrolling down decreases the zoom. It is important that the zooming is comfortable, not too fast or slow or jerky.
  3. **Preview Pan:** Pans the image, like using the pan tool or navigator. It is important that the panning is comfortable, not too fast or slow or jerky.
  4. **Brush Size:** Adjusts the size of the current tool if relevant, such as a brush tool.
3. **Preview Background Color:** You may select the color of the background behind the preview image. The default color is black. There should be options for black, white, light gray, dark gray and custom... The custom option a color picker where you can select your own background color
4. **Start In:** Determines which module will open at launch. Browse is the default.
5. **Remember Last Browsed Folder:** Enabled by default this will open the last browsed folder when you launch the program.
6. **Check of Updates on Launch:** Enabled by default, the product will communicate with onOne server at launch and if an update is available it will prompt you to download, or skip.
7. **Warn when leaving files in Layers:** Enabled by default, if you have unsaved files open in Layers and want to close the program a warning dialog will appear with the options to Save & Close, Cancel, or OK which will close without saving.



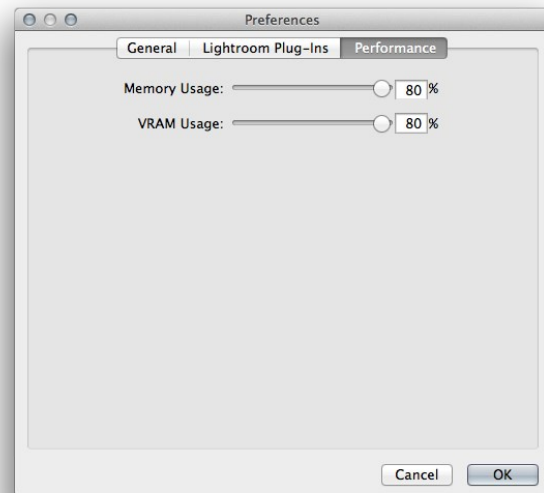
### Lightroom Plug-In Settings

1. **File Type:** Specifies four options. PSD (Supports Layers, Defaults Setting. Same as Source (PSD for Raw). TIFF (No Layers). JPEG (No Layers).
2. **Color Space:** Specifies the color space to use when processing copies from Lightroom. This is similar to the working color space pop-up in the general preferences tab, however there are only the three options supported by Lightroom: sRGB, Adobe RGB 1998 and ProPhotoRGB.
3. **Bit Depth:** Sets the bit depth for the copies created by Lightroom, the options are 8 and 16 bit.
4. **Resolution:** Sets the resolution of copies created by Lightroom.
5. **Stack with Original:** Enabled by default, copies created by Lightroom are stacked with their original or source image.
6. **Use Original for Single PSDs:** Enabled by default. If your selection is a single PSD file, the original PSD is opened rather than creating a copy.



## Performance Settings

1. **Memory Usage:** Specifies the amount of system memory (RAM) that is used by the application. The default is 80%.
2. **VRAM Usage:** Specifies the amount of video memory (VRAM) that is used by the application. The default 80%.



## Browse Module

The Browse Module is the perfect place to find the images you want to edit with Perfect Effects. It gives you easy access to all your images, no matter where they live on your computer, network or cloud based storage service. You can browse and search any file type that is supported. You can also view your images as a thumbnail grid or larger detail view along with important metadata.

**Some of the features:**

- Find your photos fast, anywhere they live
  - Local drives
  - Network drives
  - Online storages services
- Create a selection of images for Batch processing
- Fast browsing without the need of a catalog
- Copy, move, delete and rename files



## Getting Started

This getting started section will give you the basics of using the Browse Module. You might also try watching the [getting started video tutorial](#). For detailed information on steps and controls mentioned in the getting started section, see the "Using the Browse Module" section instead.

Pages in this Section

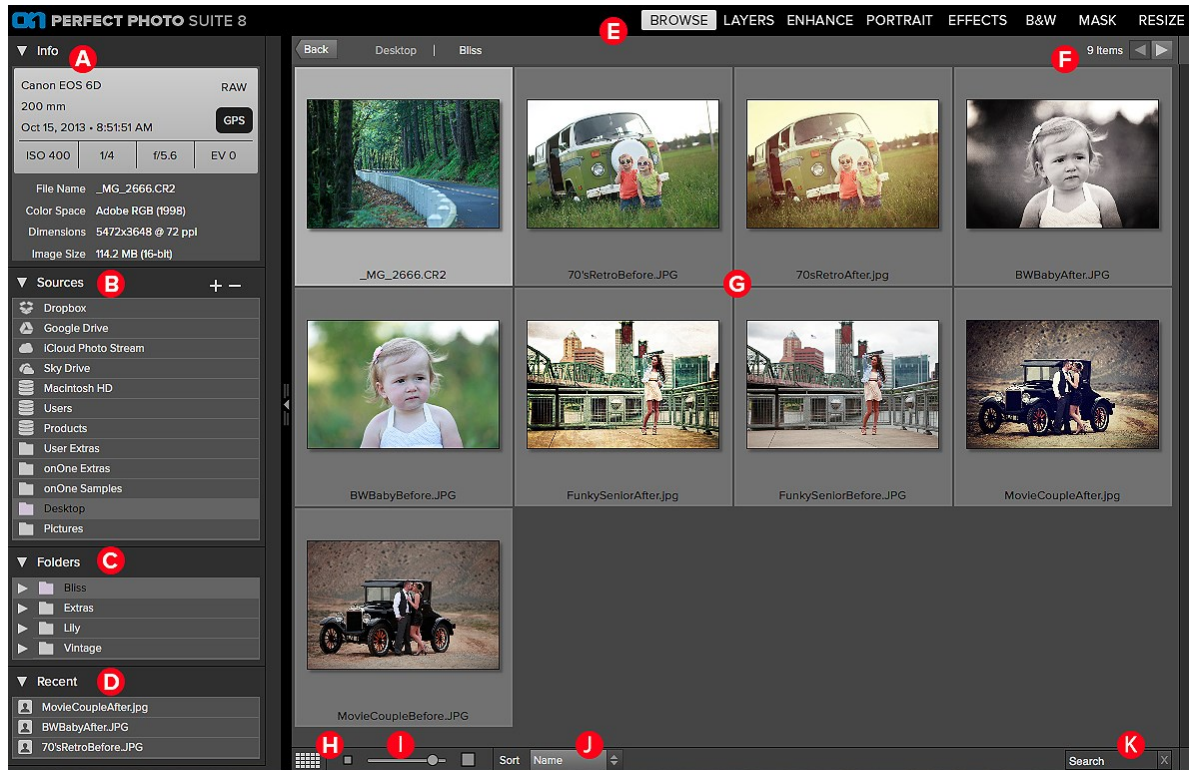
[Browse Workspace](#)

[Finding and Opening Files](#)

## Browse Workspace

The Browse Module allows easy access to your images on your computer, network or cloud based storage device while viewing a thumbnail grid or scrolling through a larger detail view.

The Main Window:



The main window sections of Browse Module:

- A. Info Pane: This section will give you detailed information about your image when available.
- B. Sources Pane: This contains a list of common photo locations, including disks, favorites and cloud storage services.
- C. Folders Pane: This displays the hierarchical tree view of the current selected Source.
- D. Recent Pane: This keeps track of recently opened files and folders.
- E. Module Selector: This lists the available modules.
- F. This will display the number of files and folders you are viewing, you can use the arrow keys to move from item to item.
- G. This is your main preview window where you can view your images as thumbnails or a larger detail.
- H. Use this button to switch from thumbnail view to detail view.
- I. This slider will adjust the thumbnail size in your main preview window.
- J. This pop up will adjust your sort from filename to date modified in your main preview window.
- K. This search box allows you to search by name the contents of the current folder.

## Finding and Opening Files

1. Start by selecting a source for your images in the left Sources pane. Any disks inside or attached to your computer will appear as disks. Supported Cloud Storage services appear at the top of the list. Any favorites, like your Pictures folder, will appear at the bottom of the list.
2. Once you select your Source, navigate to the folder in the Folders pane to find your images. You can also do this within the thumbnail matrix. Once you have found a file you wish to work on simply click on the file to select it. The thumbnail will appear to be highlighted.
3. Click on the module you want to use in the Module Selector located in the top right (A) or you can also right-click and choose a module in the pop up menu (B).
4. The [Edit What dialog](#) will appear with file options. Select your options and click "Open" to begin working on your image.
5. When you complete your work in a module, return to Browse to automatically save and close the image.





## Using the Browse Module

This section covers the complete use of the Browse Module. It includes how to navigate your folders, customize sources as well as information on preferences and menu options.

### Pages in this Section

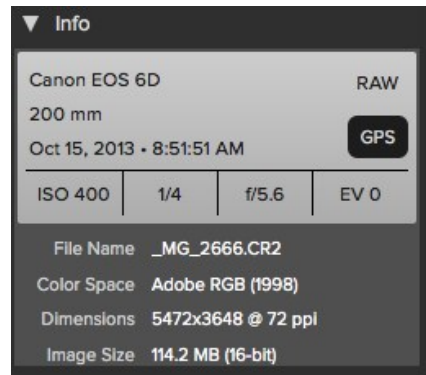
- [Using the Info Pane](#)
- [Navigating Sources](#)
- [Navigating Folders](#)
- [Navigating Recent Pane](#)
- [Working in Thumbnail View](#)
- [Working in Detail View](#)
- [Managing Files and Folders](#)
- [Opening an Image](#)
- [Menus](#)
- [Keyboard Shortcuts](#)



## Using the Info Pane

The Info Pane displays the metadata for the currently selected file. This information may include:

- Camera Make and Model
- Focal Length
- Capture Date and Time
- File Type
- GPS Data
- ISO
- Shutter Speed
- Aperture
- Exposure Compensation value



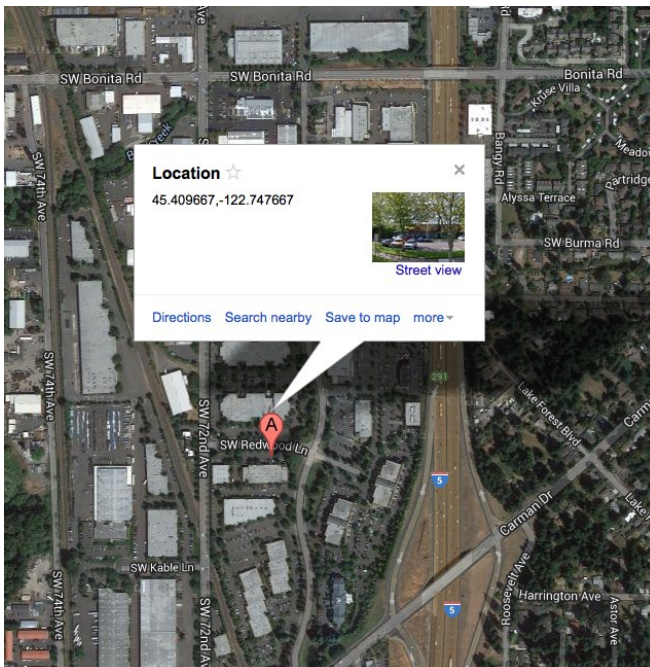
\*If any of the metadata fields are unavailable they will be left blank.

Additional generic file information is also displayed in the Info Pane Including:

- Filename
- Colorspace (color profile)
- Pixel Dimensions and Resolution
- Image size and Bit depth

### GPS Metadata

If your image has GPS metadata embedded in it, the GPS button will appear. Clicking on this button will open the default web browser to Google Maps and navigate to the location where the image was taken.



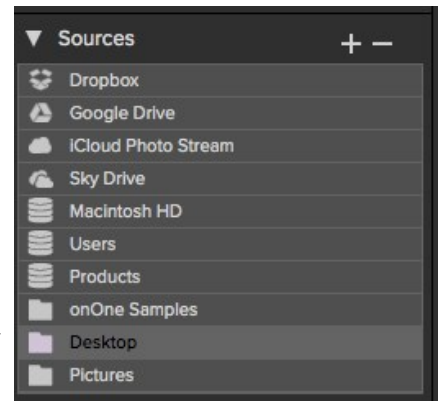
## Navigating Sources

The Sources Pane contains a list of cloud storage services, attached disks, and common or favorite locations.

### Cloud Storage Services

Browse supports several common cloud storage services including Dropbox, Google Drive, Microsoft Sky Drive and Apple iCloud Photo Stream. All of these services keep local copies of your images on your computer. Browse finds and monitors these locations automatically. If you edit an image stored in one of these locations they are automatically updated to the cloud.

Browse automatically finds the default installation locations for these services. If you do not have one of these services installed, or you have it installed to a non-standard location you will be asked to install or locate the folder when you click on the source.



iCloud Photo Stream is a read-only source. You can open a copy of an image from it and save it to a new location only.

### Attached Disks

Browse automatically recognizes any disk (volume) inside or attached to your computer. This includes:

- Hard drives in your computer
- Hard drives attached to your computer with USB, Firewire, Thunderbolt, etc.
- Optical drives
- USB thumb drives
- Digital camera memory cards
- Digital cameras, music players and smartphones that support USB Mass Storage
- Network drives

Disks appear in the middle of the Sources pane with a hard drive icon next to them. Keep in mind that some disks, like optical drives, are often read-only. You will be able to open a copy of an image, but will be prompted to save the image to a new location.

### Favorites

Browse also supports creating Favorites. A Favorite is a short-cut to any file path where you store your images. Several Favorites are installed by default such as your Desktop, Pictures and the onOne Sample images folders.

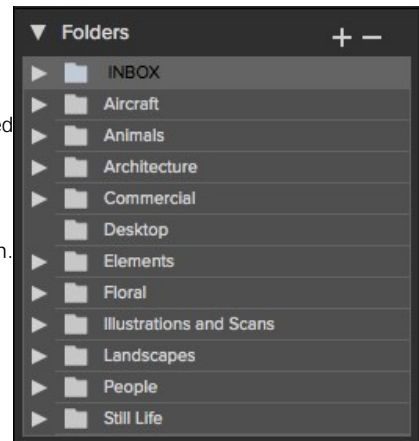
You can create your own Favorites by pressing the plus icon at the top of the Sources pane. An open dialog will appear where you can navigate to the folder you wish to add as a Favorite. You can also remove a favorite by selecting it in the Sources pane, then pressing the minus button.

You can also add a favorite by simply dragging it into the Sources pane.

## Navigating Folders

The Folders pane displays the hierarchical tree view of the current selected Source. You can close and open the subfolders by clicking on the triangle. You can navigate to your folder of choice within the pane or you can also use your preview window. Keep in mind that the Folder view only shows the folders, or directories inside the current source. This helps to reduce clutter and make it faster to find the image you are looking for. If you need to see folders outside of the current source, select the disk the images are located on instead of the Favorite.

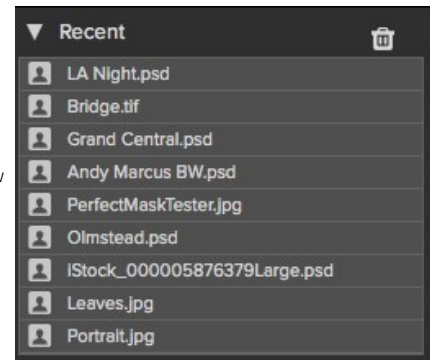
- You can add a new folder, as a child of the current folder, by pressing the plus icon.
- You can delete the current folder by pressing the minus icon.
- You can rename a folder by right-clicking and selecting Rename.
- You can move a folder by dragging it into another folder.



## Navigating Recent Pane

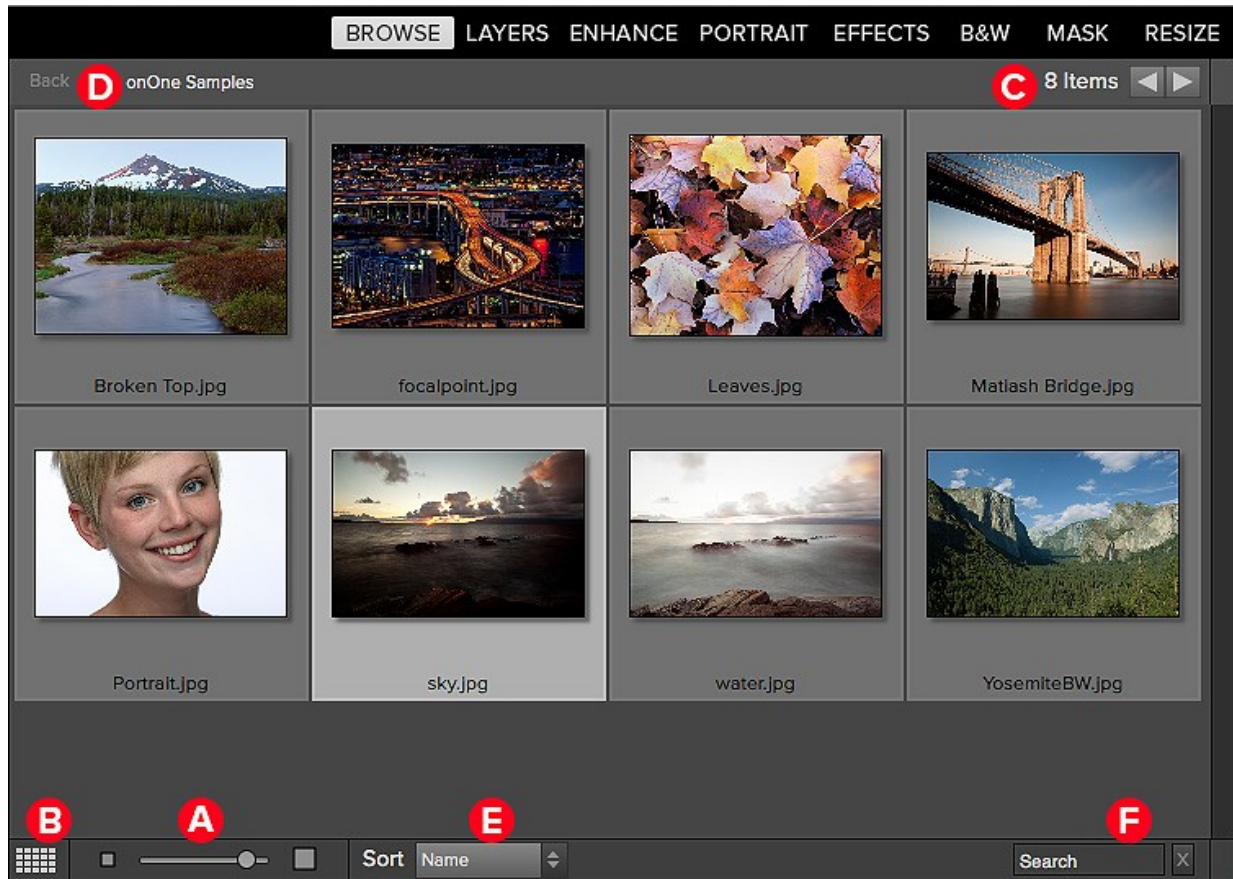
The Recent Pane keeps track of recently opened files or manually browsed folders. Files are listed in order of last opened. If you have not opened any files this pane will be empty. You can quickly access your most recent files in this pane by clicking on the one you want and it will appear in your main preview window. Keep in mind the Recent pane only shows files you have opened directly from Perfect Effects, not files you have sent to Perfect Effects from Lightroom, Aperture or Photoshop.

You can clear the recent file list by pressing the trash can icon.



## Working in Thumbnail View

The Thumbnail area is the largest part of the main window and it is responsible for displaying thumbnails of folders and images you have selected using the Source and Folder Panes.



- A. Adjust the size of the thumbnails using the slider located at the bottom or use "-/+" keys on your keyboard.
- B. Change the viewing mode between thumbnail and detail view.
- C. When Previewing images at full screen you can quickly go to the next image by using the navigational arrows.
- D. Use the breadcrumbs to quickly return to the root or click "back" to return one folder.
- E. Sort the thumbnails by filename or date using the pull down menu. The sort will always be descending, A-Z or oldest to newest.
- F. Search for folders or files in the current folder.

### Selecting Multiple Images

Select the first image and hold down on the 'shift' key and click on the last image of the group. If the images you wish to select are not in sequential order you can select each image individually by selecting the first image, now hold down 'Command' (Mac) or 'Control' (Windows) and select each image(s) while continuing to hold down on the Command/Control key.

#### See also

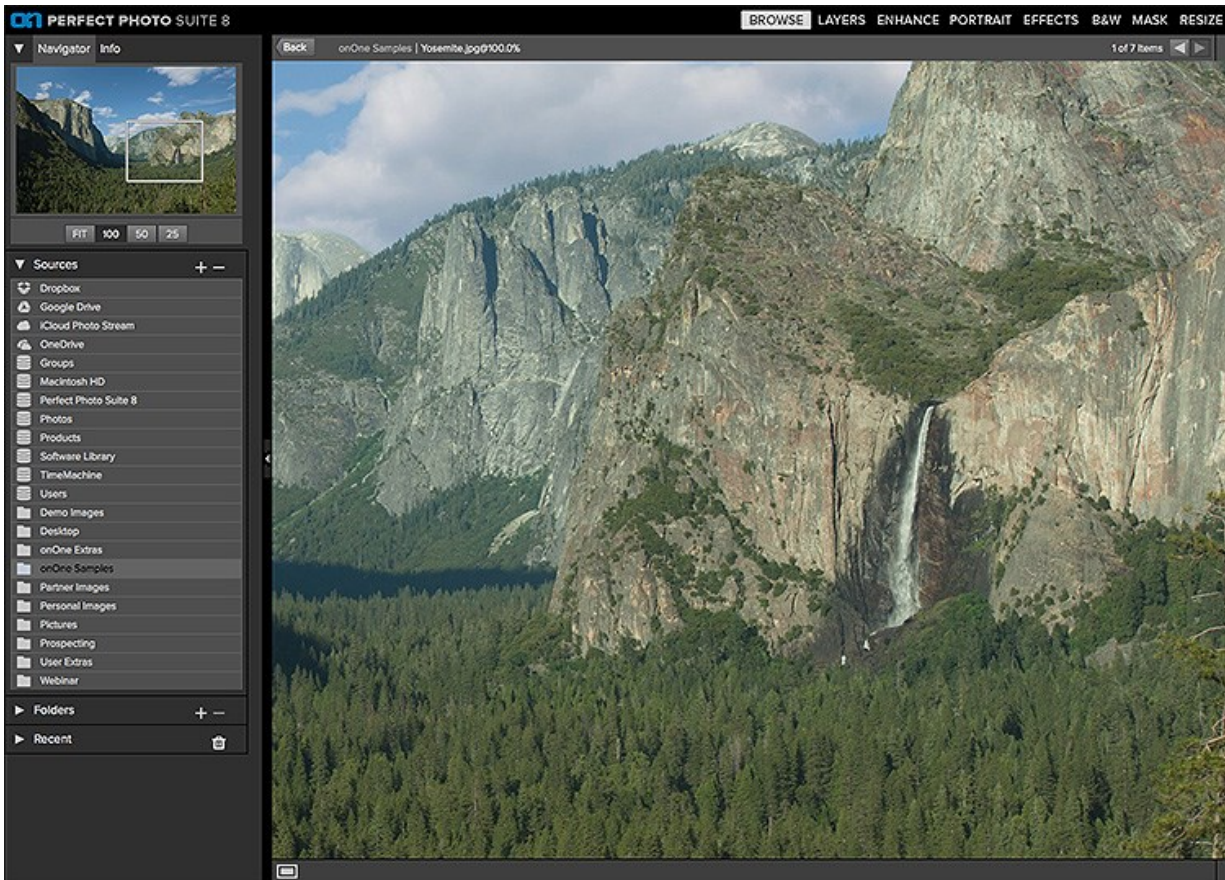
[Using the Info Pane](#)  
[Navigating Sources](#)  
[Navigating Folders](#)  
[Navigating Recent Pane](#)  
[Working in Detail View](#)  
[Managing Files and Folders](#)  
[Opening an Image](#)  
[Menus](#)  
[Keyboard Shortcuts](#)



## Working in Detail View

In Detail View you can see a full-screen version of images. By default when you go to Detail View, your images will be displayed in fit mode, so you can see the entire image. However you can click on the image to zoom in to 100% or actual pixels. This is useful for judging small details and sharpness. Single-clicking on a image that is magnified will return back to fit mode. You can click and drag a magnified image to look around. Your zoom mode is maintained as you move from image to image so you can compare the same spot in several frames.

There is also a Navigator pane where you can reposition the preview and change the magnification amount.

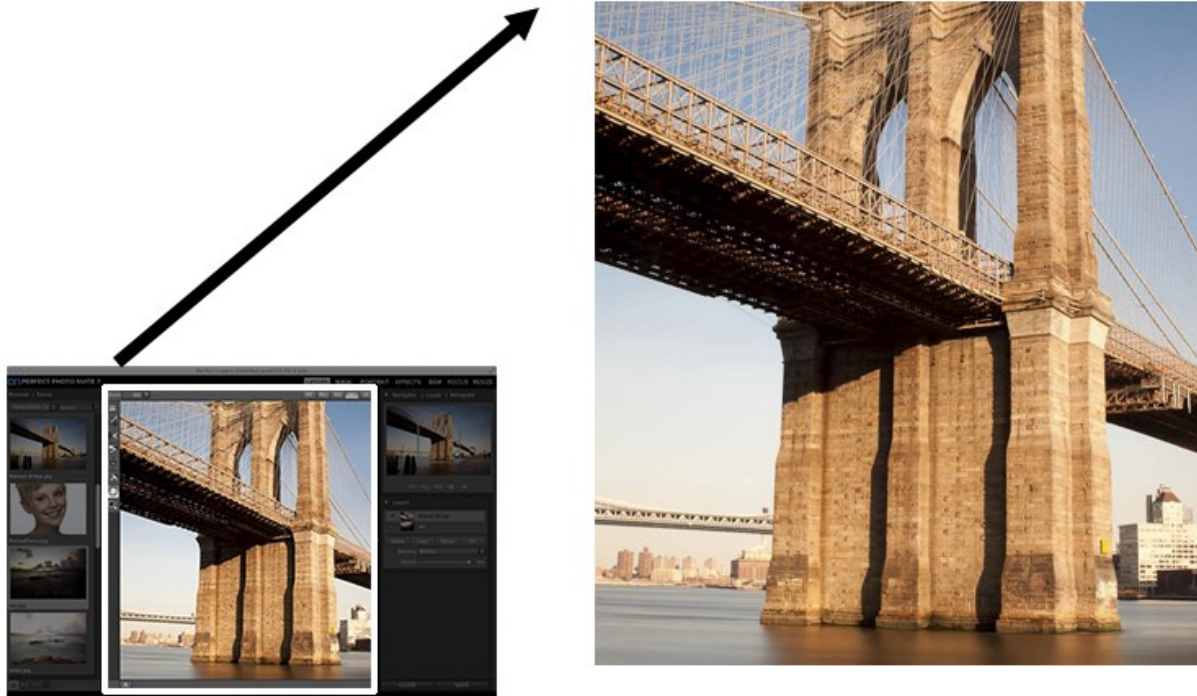


### See also

- [Using the Info Pane](#)
- [Navigating Sources](#)
- [Navigating Folders](#)
- [Navigating Recent Pane](#)
- [Working in Thumbnail View](#)
- [Managing Files and Folders](#)
- [Opening an Image](#)
- [Menus](#)
- [Keyboard Shortcuts](#)

## Navigating the Preview

This provides several ways to navigate and view your image in the Preview window.



The Preview Window above is the main section where you preview and work on images.



Hand Tool

The Hand tool is used to position the image within the Preview window, whenever the preview zoom is larger than the viewable area.

To pan (scroll) in the Preview window:

- Select the Hand Tool and drag the image until you locate the area you wish to view.
- With any other tool selected, hold down the spacebar while you drag the image in the window.



Double-click the Hand tool in the Toolbar to set the image to a magnification that fits completely in the current window size.



Zoom Tool

The Zoom tool changes the magnification of the image in the Preview window.

With the Zoom tool selected:

- Click in the Preview window to zoom in and center the image at the location clicked.
- Click and drag in the Preview window to draw a rectangular, the screen fills with the area within the rectangle when you release the mouse.
- Hold the Option key (Mac) or Alt key (Win) and click to zoom out.



Double-click the Zoom tool in the Toolbar to set the image to 1:1 or 100% magnification, showing every pixel. This is best when examining small details.



## Navigator

At the top of the control panel on the right of the main window is the Navigator | Info panes. It contains four useful tools for inspecting and viewing details of your image.

### The Navigator Pane

This gives you a birds-eye view of your image. The blue square region marks the image area that is visible in the preview pane. You can pan your image by clicking and dragging inside the blue region.

At the bottom of the Navigator pane are several Zoom presets. Click on a Zoom preset to activate.

- FIT: Zooms to fit the current canvas size. This allows you to see your entire image.
- 100: Zooms to 100% or actual pixels. This is best for judging small details.
- 50: Zooms to 50%
- 25: Zooms to 25%



## Managing Files and Folders

You can use the Browse module to organize, delete and rename files and folders. This makes it a useful workflow tool for any photographer.

### Deleting a file or folder

To delete a file or folder in the preview area, simply press the delete key or select delete from the right-click contextual menu.

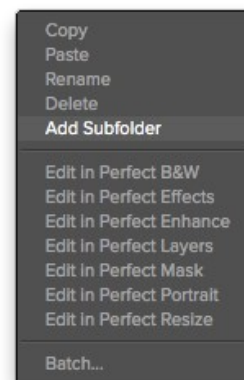
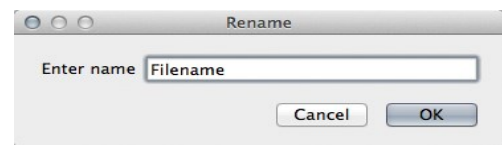
Then confirm that you wish to move the file to the trash. If you make a mistake you can use the undo command. If you have multiple files and or folders selected it will move them all to the trash. Some files or folders, like those on a network volume must be deleted immediately and cannot be undone.

### Renaming a file or folder

You can rename a file or folder by selecting it, then choose Rename from the right-click contextual menu.

### Creating folder

You can create a new folder from the the right-click contextual menu in the preview area or by pressing the plus "+" icon in the Folders pane. This will create a new folder inside the selected folder.



### Copying and Moving files and folders

You can copy and move files and folders in the ways you are accustomed to on your computer. You can select files and folders and use the copy command to copy them to the clipboard and then the paste command to paste them to new location, inside or outside of Browse. You can use this to copy a file or folder from one place to another or to attach an image to an email for example.

You can also use the familiar drag and drop functions to copy or move files and folders. Dragging and dropping a file or folder will move it if it is on the same drive or copy it to another drive. You can drag and drop into and out of the Browse module.

## Opening an Image

Select the file and select a module from the module selector in the upper right menu bar or right click on the file and choose a module from the pop up menu. You will be presented with the What to Edit dialog below.

### What to Edit

After you have selected a file and chosen a module a File Options dialogue will appear. You can choose between: Edit a Copy, Edit Original or Add as a Layer.

**Edit a Copy-** This is the default option. A copy of the image is created and will be saved to the same path as the original file. After you Save/Apply the file name will be (Original Filename) **copy.ext** — with the extension you have selected.

**Edit Original-** This option will open the original file and overwrite the current file when saved. This option will be unavailable for camera raw files or read-only files.

**Add as a Layer-** This opens the original file and it is added as a layer in Perfect Layers. This option is only available for launching in Perfect Layers.

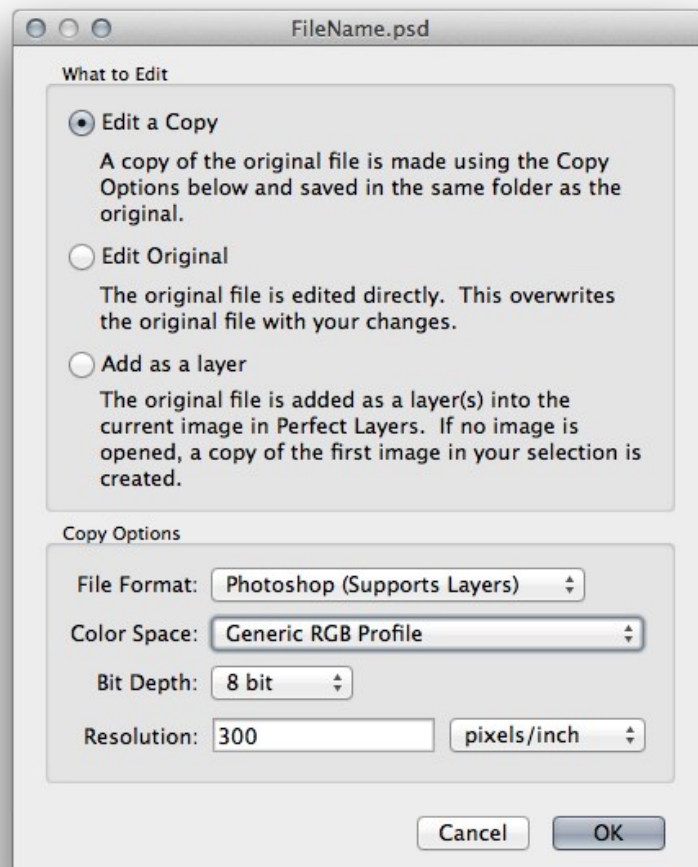
### Copy Options

**File Format-** Choose one of the following file formats you wish to work with. Photoshop (.psd) files will support layers, this means when the file is saved all the individual layers will be available again when re-opened. For Tiff and JPEG no layers will be retained and the Layers will be merged into a single composite when saved.

**Color Space-** This will list the RGB color profiles installed on your system.

**Bit Depth-** This sets the bit-depth of the copied image. This option is unavailable for JPEG format, which is limited to 8-bit.

**Resolution-** This sets the resolution or ppi for the image, it is 300 by default.



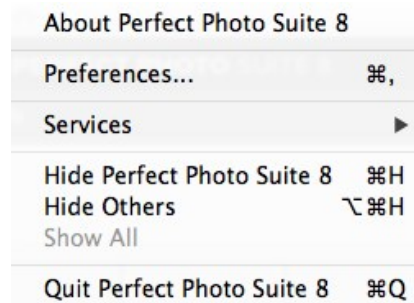
### See also

[Using the Info Pane](#)  
[Navigating Sources](#)  
[Navigating Folders](#)  
[Navigating Recent Pane](#)  
[Working in Thumbnail View](#)  
[Working in Detail View](#)  
[Managing Files and Folders](#)  
[Menus](#)  
[Keyboard Shortcuts](#)

## Menus

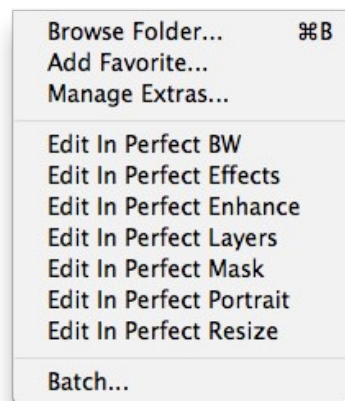
### Perfect Effects (Mac OS X Only)

**About Perfect Effects:** Opens the about box, displays your version number and activation code. (Help menu on Windows)  
**Preferences:** Opens the preferences dialog. (Edit menu on Windows)  
**Quit Perfect Effects:** Quits Perfect Effects.



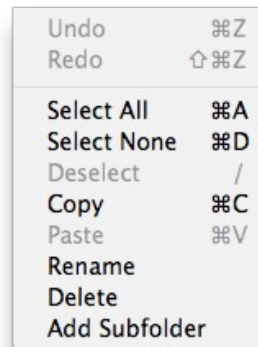
### File Menu

**Browse Folder:** Opens the browse dialog where you can select which folder you would like to browse  
**Add Favorite:** Opens the add favorite dialog that you can add a favorite folder permanently to the Sources pane  
**Manage Extras:** Opens the Extras Manager where you can import and manage extras like Borders, Backgrounds, Textures and Presets.  
**Edit in...:** Will launch the module with the file you have currently selected  
**Batch:** Opens the Batch mode window



### Edit Menu

**Undo:** Undoes the last file operation. This is only available the last thing you did.  
**Redo:** Redoes the undo operation. This is only available if the last thing you did was an undo.  
**Select All:** Selects all the images in the current folder  
**Select None:** Deselects all the images in the current folder  
**Deselect:** Deselects the current item  
**Copy:** Copies the currently selected items  
**Paste:** Pastes (copies) the items in the clipboard to the current location  
**Rename:** Renames the selected file or folder  
**Delete:** Moves the selected files and or folders to the trash  
**Add Subfolder:** Adds a new empty subfolder inside the current folder



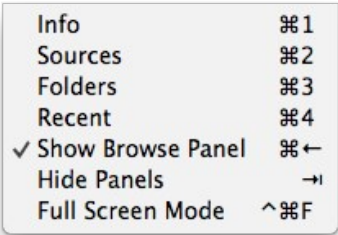
### View Menu

**Bigger Thumbnails:** Increases the size of the thumbnails  
**Smaller Thumbnails:** Decreases the size of thumbnails  
**Sort:** Sort by filename or date  
**View Mode:** Select from thumbnail or Detail view.  
**Preview Background Color:** Change the preview background color the thumbnails



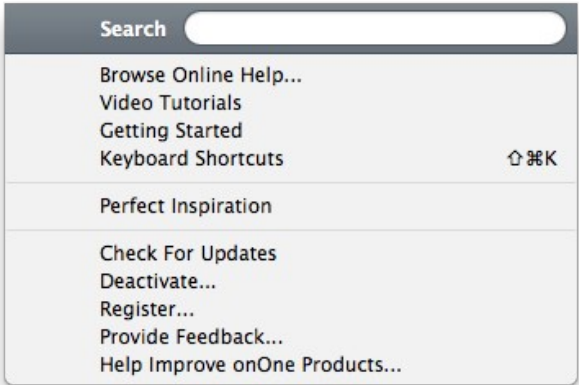
Window Menu

- Info:** Opens and closes the Info pane.
- Sources:** Opens and closes the Sources pane.
- Folders:** Opens and closes the Folders pane.
- Recent:** Opens and closes the Recent pane.
- Show Browse Panel:** Hides or reveals the entire Browse Panel (left column of control panes).
- Hide Panels:** Hides or reveals both the left and the right Panels.
- Full Screen Mode:** Enters or exits full-screen mode



Help Menu

- Search:** Searches the menus (Mac OSX only).
- Browse Online Help:** Opens this html Help in your default web browser.
- Video Tutorials:** Opens the online Video Tutorial in your default web browser.
- Getting Started:** Opens the online Getting Started overlay.
- Show Keyboard Shortcuts:** Opens the keyboard shortcut inspector.
- Perfect Inspiration:** Takes you to the Perfect Inspiration web site.
- Check for Updates:** Checks with the onOne update server to see if you are running the current version. If there is a newer version you will be notified and be walked through the update process.
- Deactivate:** Opens the activation dialog. These are used to deactivate your software for moving it to another computer or for a return.
- Registration:** Opens the default web browser and navigates to the registration page of the onOne website.
- Provide Feedback:** Opens the default web browser and navigates to the feedback page of the onOne website.
- Help Improve onOne Products:** Opens the Improve onOne Products dialog.



## Keyboard Shortcuts

	Mac OSX	Windows
Browse Folder	cmd b	ctl b
Exit	cmd q	ctl q
Select All	cmd a	ctl a
Select None	cmd d	ctl d
Deselect	/	/
Bigger Thumbnails	cmd +	ctl +
Smaller Thumbnails	cmd -	ctl -
Return to Thumbnail View	esc or g	esc or g
Switch to Detail View	e	e
Delete Item	delete	delete
Copy Selected Items	cmd c	ctl c
Paste Items from Clipboard	cmd v	ctl v
Zoom in	cmd +	ctl +
Zoom out	cmd -	ctl -
Fit to screen	cmd 0	ctl 0
Actual pixels	cmd opt 0	ctl alt 0
Info	cmd 1	ctl 1
Sources	cmd 2	ctl 2
Folders	cmd 3	ctl 3
Recent	cmd 4	ctl 4
Hide Panels	tab	tab
Full Screen Mode	cmd ctl f	F11
Keyboard Shortcuts	cmd shift k	ctl shift k

## Perfect Effects

**Perfect Effects gives photographers a fast and powerful way to create images with impact.**

It includes an updated library of professional quality photographic filters that can be previewed live on your image before being applied. Live previews are shown in full screen so you can see your image at its best. You'll enjoy the ability to stack multiple filters together to create your own unique look.

Perfect Effects takes the idea of stacking filters further with updated blending options that provide better control over how effects are combined. These advanced tools include blending modes options and the ability to limit filters to specific color or tonal ranges of an image.



## Getting Started

This getting started section will give you the basics of using Perfect Effects. If you have never used Perfect Effects before this is a good place to start. You can also watch the [getting started video tutorial](#). For detailed information on steps and controls mentioned in the getting started section see the Using Perfect Effects section instead.

### When to use Perfect Effects

The broad range of effects in Perfect Effects makes it useful at many steps in the digital workflow. For example, the filters in the Brightness, Contrast and Color Correction categories may be used early in the workflow for correcting the color and tone of an image. While filters in many categories are designed for a more artistic effect, it may be used in the middle of the process as well. Finally, Perfect Effects has several filters designed for sharpening in the Sharpening category that should be applied as the last step before printing.



## User Interface

Perfect Effects Main Window:



- A. Effects Browser: This library of filters is located on the left side of the window for easy browsing.
- B. Tool Well: This is where the tools are located.
- C. Preview Window: This is the main section where you preview and work on images.
- D. Tools Option Bar: This is where information and options about each tool is set.
- E. Module Selector: This is where you choose which software module to open.
- F. Navigator, Loupe and Histogram Pane: This pane will access the Navigational, Loupe and Histogram features.
- G. Filter Stack: This is where you view and stack filters.
- H. Filter Options: This is where you access the filter options pane.
- I. Cancel/Apply Buttons: This is where you cancel or apply an action.

### The Perfect Effects Tool Well

There are four different tools in the Perfect Effects tool well. More details about each tool will be covered in the next chapters.

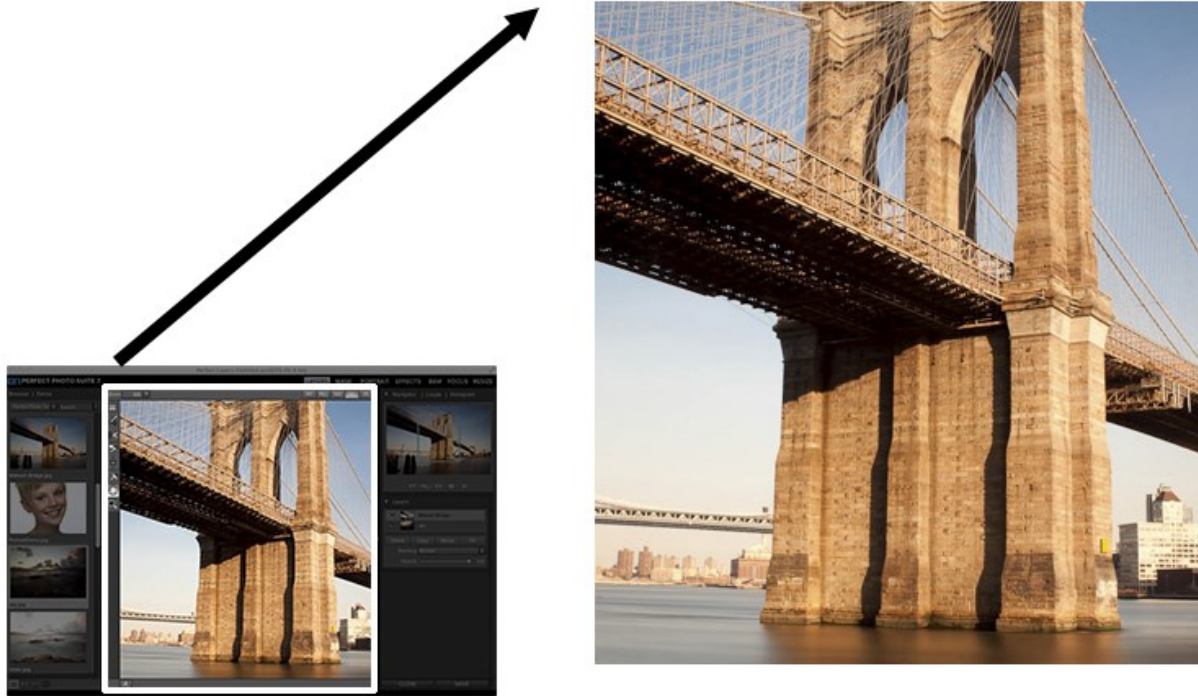


- Masking Brush** This masks out areas using brush strokes to expose underlying layers.
- Masking Bug** This tool lets you mask out the layer to expose the original underlying image.
- Hand Tool** This tool drags your image within the preview window when it's larger than the viewable area.
- Zoom Tool** This tool changes the magnification in the preview window.

## Navigating the Preview

### Perfect Effects

This provides several ways to navigate and view your image in the Preview window.



The Preview Window above is the main section where you preview and work on images.



Hand Tool

The Hand tool is used to position the image within the Preview window, whenever the preview zoom is larger than the viewable area.

To pan (scroll) in the Preview window:

- Select the Hand Tool and drag the image until you locate the area you wish to view.
- With any other tool selected, hold down the spacebar while you drag the image in the window.



Double-click the Hand tool in the Toolbar to set the image to a magnification that fits completely in the current window size.



Zoom Tool

The Zoom tool changes the magnification of the image in the Preview window.

With the Zoom tool selected:

- Click in the Preview window to zoom in and center the image at the location clicked.
- Click and drag in the Preview window to draw a rectangular, the screen fills with the area within the rectangle when you release the mouse.
- Hold the Option key (Mac) or Alt key (Win) and click to zoom out.



Double-click the Zoom tool in the Toolbar to set the image to 1:1 or 100% magnification, showing every pixel. This is best when examining small details.

## Navigator, Loupe, Histogram and Info

At the top of the control panel on the right of the main window is the Navigator | Loupe | Histogram | Info panes. It contains four useful tools for inspecting and viewing details of your image.

### The Navigator Pane

This gives you a birds-eye view of your image. The blue square region marks the image area that is visible in the preview pane. You can pan your image by clicking and dragging inside the blue region.

At the bottom of the Navigator pane are several Zoom presets. Click on a Zoom preset to activate.

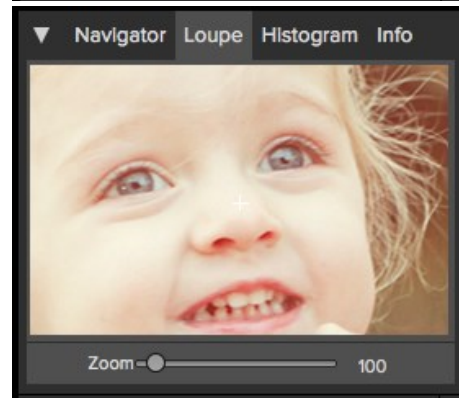
- FIT: Zooms to fit the current canvas size. This allows you to see your entire image.
- 100: Zooms to 100% or actual pixels. This is best for judging small details.
- 50: Zooms to 50%
- 25: Zooms to 25%



### The Loupe Pane

This gives you a magnified view of the section of the preview under the cursor. This allows you to view the quality of your results while maintaining a complete view of your image.

At the bottom of the Loupe Pane is a sliding for adjusting the zoom level.

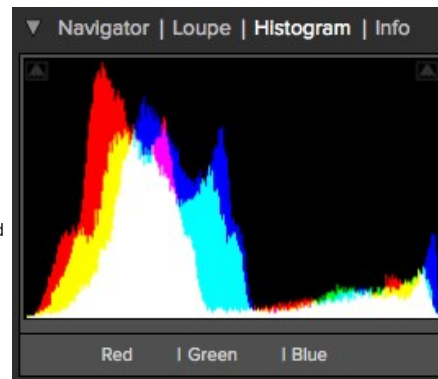


## The Histogram Pane

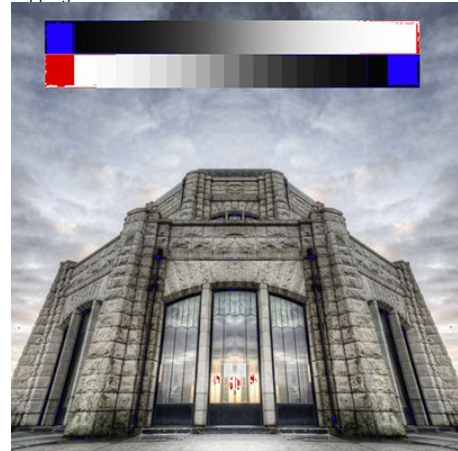
This gives you a color chart of the shadow, mid-tone and highlight areas based on the image RGB values. This is useful to show areas within the image that may be clipping. Clipping is when your image contains pure blacks or white and can signify loss of highlight or shadow detail.

The left side of the histogram represents the shadows, while the right represents the highlights. At the top of each end is a triangle. If the triangle is lit, there is clipping on that side of the histogram. If you click on the arrows, you will activate the clipping overlay on your image. The areas of your image with a blue overlay are pure black, while the areas with the red overlay are pure white. You can turn the clipping view off again by clicking on one of the triangles. You can also temporarily enable clipping view by holding down the J key at any time. The clipping view is useful when you are making adjusts to the brightness and contrast of your image.

The Histogram pane also displays the RGB values under the cursor at the bottom of the pane.



Clipping View



## The Info Pane

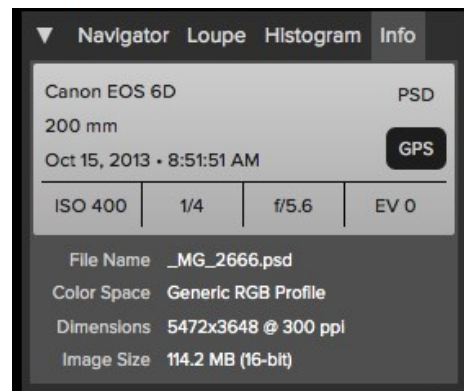
The info pane will display important metadata about your file including:

- Camera type
- File type
- Focal length and lens information
- Date and time captured
- Exposure information
  - ISO
  - Shutter Speed
  - Aperture
  - Exposure Value
- Filename
- Color Space
- Dimensions
- File Size and Bit Depth

If your camera allows for GPS the GPS button will be viewable and you can click on it to get the GPS coordinates for where the image was taken. This feature only works if you have GPS enabled on your camera or mobile device. Otherwise you will not see the GPS button.



The Info panel is not visible when you access Perfect Effects as a Photoshop plug-in.





## Preview Window Modes

The preview window has several modes including; single image, side-by-side (horizontal or vertical) and split-screen (horizontal or vertical) versions of an image. This allows you to compare layers side-by-side or to view a layer mask and the layer side-by-side. At the bottom left of the Preview Window is a button that toggles and shows the current Preview Mode. You can also change the mode from the View menu.



Single Mode Screen.



Left-Right Screen.



Left-Right Split Screen.



Top-Bottom Screen.



Top-Bottom Split Screen.

Tip: You can use the keyboard shortcuts below to quickly switch view modes. Items in parenthesis are for Windows.

- Command (Control) L:** Change the preview mode to Left/Right.
- Command-Option (Control-Alt) L:** Change the preview mode to Left/Right Split screen.
- Command (Control) T:** Change the preview mode to Top/Bottom.
- Command-Option (Control-Alt) T:** Change the preview mode to Top/Bottom Split screen.
- Command (Control) Y:** Change the view mode to single image.

## Using Perfect Effects

Perfect Effects is designed to work in steps by adding and adjusting multiple effects on top of each other. If you are a photographer, think of this like adding filters over your camera's lens. First, you would add a polarizer to increase the contrast. Next you would add a graduated neutral density filter to darken the sky and perhaps add a vignette lens hood to darken the edges. This same concept is what drives Perfect Effects, except you have many more filters and more flexibility and control.

Perfect Effects provides several ways to work depending on your skill level. It works for beginners through advanced users. Below are example workflows for different levels.

### Beginner

A new user can simply click on a filter and apply it. This is the easiest way to get started.

1. Start by opening an image into Perfect Effects.
2. On the left side you will see the Browser with a list of categories. Click on a category to open up a series of filters. You will now see your image with a different filter applied.
3. Simply click on the filter you like and press the Apply button.

### Intermediate

An intermediate user may try stacking filters and adjusting their strength.

1. Start by opening an image into Perfect Effects.
2. Add a filter from the Browser, adjust its strength with the sliders in the Filter Options pane.
3. Add another filter layer by pressing the Add button in the Filter Stack pane, then select a new filter from the library.
4. Continue to add filters and adjust their settings.
5. When you have created a filter stack you like, press the Apply button.

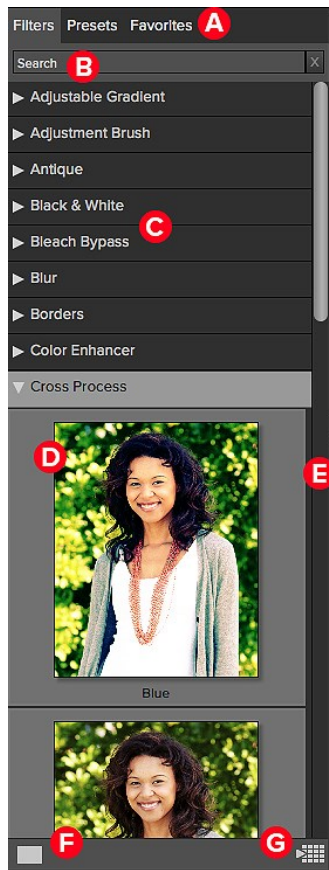
### Advanced

An advanced user may stack multiple filters, adjust the strength, blending options, filter options and use the masking tools to selectively apply filters.

1. Start by opening an image into Perfect Effects.
2. Add a filter from the Browser.
3. Adjust the filter options in the Filter Options pane. This pane contains controls relevant to the selected filter.
4. Use the blending options to control the blending mode. You can also control which color or tonal ranges are affected.
5. Continue adding effect filters, adjusting the filter options and blending options to achieve the desired look.
6. Use the masking tools to selectively apply each filter layer by painting them in or out or applying a filter as a gradient or vignette.
7. When you have created a filter stack you like, press the Apply button. You can also save a stack as a preset so it can be used again later.

## Browsing Filters

Built into Perfect Effects is a browser, located in the left panel. You can use it to browse the factory supplied filters, presets you have created or downloaded from the onOne website or for marking and finding your favorites. Below is a description of the controls in the browser.



**A. Browser Tabs:** This switches between filters, presets and favorites.

**B. Search Field:** Use the search field to locate files in the current sub-folder. Simply start to type and your results will appear in a new sub-folder called search results while you type.

**C. Filter Categories:** This will list the different filter categories for you to choose from.

**D. Image File:** A thumbnail of the image is displayed and will have the filter applied to it.

**E. Resize Handle:** On the right edge is a resize handle that you can drag to change the size of the browser or close it.

**F. Browser Modes:** These icons control the browser views. One column, two column, three column or list view.

**G. Quick View Browser Button:** Press this button to open the current folder in the Quick View Browser.

### Browser Tabs

The Browser is divided into three tabs; Filters, Presets and Favorites.

- **Filters:** The Filters tab contains the factory Filters provided by onOne Software.
- **Presets:** When save your own presets, or install presets from the onOne website, they will be located here.
- **Favorites:** When you click on the favorite flag on a filter or preset, in any tab, it is added to the Favorites tab automatically. This makes it fast to find the filters and presets you use most frequently.

### Navigating the Browser

- To open a category, click on it. To close it, click on it again.
- Only one top-level folder can be open at a time.
- The selected item, either a category, filter or preset, will have a light silver box around it.
- You can use the up and down arrow keys to change your selection in the browser.
- You can open or close categories using the command (control on Windows) up and down arrows.



You cannot move or delete presets from the browser.

### Selecting a Filter or Preset to Use

- To activate a filter or preset on your image, simply click on it.

## Searching

- To search for filters or presets in the current browser tab, type in the name of the file in the search field.
- The search results appear in a new sub-folder called search results, which will be selected automatically.
- You can clear the search field by pressing the x at the right end of the search field.

## Browser Pop-Up

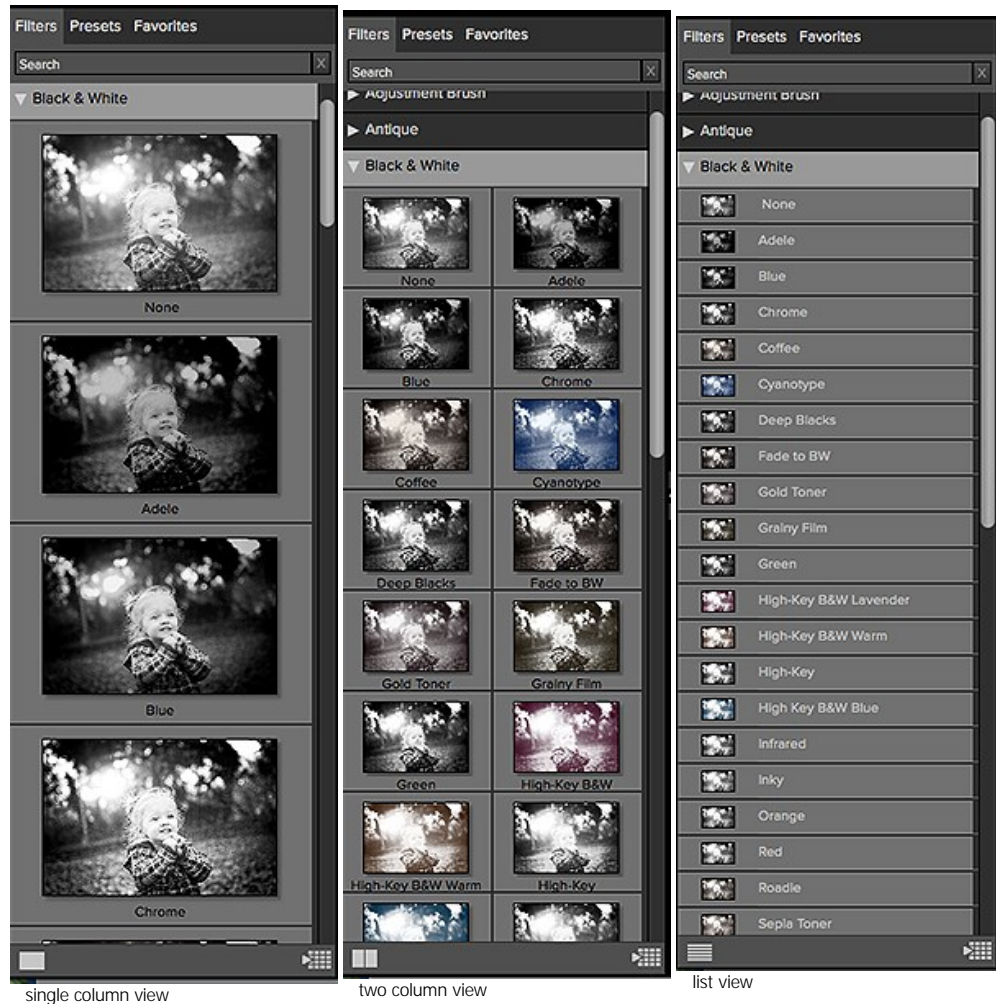
- To view a larger preview on a filter or preset, enable the Show Browser Pop-up in the View menu.
- When you mouse over a thumbnail, a larger preview will be displayed in a pop-up window.

## Resizing and Closing the Browser

- The browser can be resized by dragging the resize handle on the right margin of the browser.
- The browser can be closed or reopened by clicking on the resize handle or using the cmd (control on Windows) left and right arrow keys.

## Browser Modes

The browser offers four viewing modes. Three that display thumbnails in columns and one list view. The browser modes are selected using the browser mode icons at the bottom of the browser.



## Quick View Browser



The Quick View Browser adds an elegant full-screen view of your images, filters and presets. Whether you are looking for the right image or the right look, the Quick View Browser will make fast work of the problem. Just press the Quick View Browser button (or the option (alt) right arrow keyboard shortcut) and you will see the full array of options to choose from. You can visually navigate categories, then dive into them to find just the right look.

- Browse folders and images quickly to find the right one to work on.
- View all your filters or preset categories at one time, then dive into them to find the perfect look with an effortless, tablet feel.
- Variable thumbnail sizes gives you a few large previews or many small ones depending on your screen size and content.
- Back button and breadcrumbs make it easy to navigate a complex folder structure.
- Use your keyboard arrow keys to navigate
- Press the return key to select an item or open a folder.
- Use the command or control left arrow to go up a folder level.

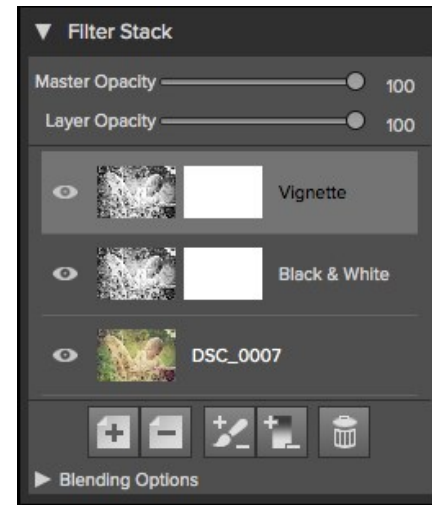


## Using the Filter Stack

**The Filter Stack is a list of all Filters and presets added to an image.**

When you add a Filter to your image, it will appear on the current Filter Layer in the Filters Stack pane. The Stack works similar to the Layers or History palettes in Photoshop. At the bottom of the Filters Stack is your original image. Each Filter you select in the Library will replace the Filter on the currently selected Filter Layer.

You can create as many Filter Layers as needed.



**You move forward and backward in time by selecting different Filter Layers in the Stack.**

For example, if you had a Filter Stack with the original and three Filter Layers applied, you could go back to the first Filter by selecting it in the Filters Stack. The second and third Filter Layers will appear disabled and your preview will show only the results of the original with the first Filter Layer applied. You can then click on the third Filter Layer, the most recently applied, and the second and third Filters will appear active again and the preview will show the results of all three Filters. The results of each Filter Layer in Perfect Effects are cumulative, so the results of the first Filter are passed to the second Filter and so forth.

It is best to work with Perfect Effects in a step-by-step process, knowing that the results from each step are the starting point for the next Filter. This means that when selecting the Filters to apply, think about the workflow order you use.

It is best to make color and tonal adjustments first, followed by special Filters and finish with final touches such as vignettes and sharpening. Thinking of the proper steps to add Filters in Perfect Effects will give you better and faster results.

### Changing the Current Filter

When you start in Perfect Effects, there will be an empty Filter Layer on top of your original. Your original is at the bottom of the Filter Stack. To add an Filter to the empty Filter Layer, select it first, then click on an Filter thumbnail in the Filters Browser. You can change the Filter in a Filter Layer by clicking a different Filter thumbnail in the Filter Library.

### Adding Filters

To add another Filter Layer so you can stack multiple Filters, click the Add button at the bottom of the Filters Stack. This creates a new empty Filter Layer. Then select another Filter from the Filter Browser.

You can also double-click on an Filter in the Filter Browser to place it in the current Filter Layer and add a new empty Filter Layer above it.

### Hiding Filters

A Filter may be temporarily hidden or revealed by pressing the Eye icon next to the Filter in the Stack. When you hide a Filter, you are not removing it from the Stack. You can reveal it again anytime. Keep in mind that hiding a Filter in the middle of the Stack may take a moment to re-render and update your preview.

### Changing Filter Order

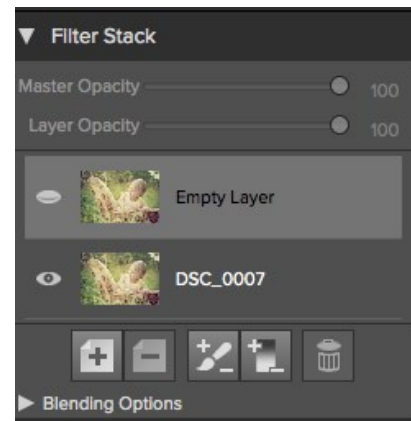
Filters may be reordered in the Stack by clicking and dragging them into the desired position. Reordering Filters can have a huge difference on the results of the image. Reordering Filters will cause the Stack to re-render which may take a few moments.

### Deleting an Filter

You remove a Filter by selecting it and pressing the Delete button at the bottom of the Filters Stack or by pressing the delete key on your keyboard.



Tip: You can clear all the Filters from the Frame Stack at once by option (alt on Windows) clicking on the delete button.



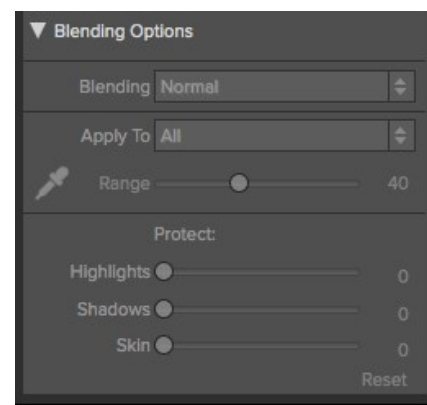
### Adjusting the Opacity

The Layer Opacity slider controls how the selected Filter blends with the previous Filter or the original image. You adjust the opacity for any Filter by selecting it and then adjusting the layer opacity slider. Adjusting the opacity slider effectively adjusts the strength of a Filter. For example, if you add a black and white conversion Filter, sliding the layer opacity down will reveal some of the color from the previous state. Usually, the opacity slider will be set to 100% when you add a Filter, however with some Filters like vignettes and soft focus Filters, it may be automatically set at 50%.

Adjusting the layer opacity slider to greater than 50% will make the Filter stronger, while adjusting it to less than 50% will make the Filter weaker.

### Blending Options

Clicking on the Blending Options arrow will drop down the Blending Options. This window offers advanced blending options between Filters.



The blending options controls are:

**Blending:** A pop-up list of blending modes. The list includes normal, lighten, darken, screen, multiply, softlight, hardlight, overlay and color.

**Apply Filter To:** A pop-up list of color or tonal ranges will appear, only one may be selected. The options are; all, highlights, midtones, shadows, reds, greens, blues, magentas, cyans, yellows, flesh colors, vivid colors and neutrals. This applied Filter creates a selection based on the lightness, hue, or saturation range specified. There is a Fuzziness slider associated with this control that adjusts the hardness or precision of the selection. The range is zero to 100.

**Custom:** Select the Dropper tool and click on the image to sample a custom color range.

**Protect:** The protect sliders are used to remove an Filter from a specific color or tonal range. The sliders are; highlights, shadows and skin. The selection created should be feathered and appear natural. The default for these sliders is zero; the range is zero to 64. The range for Flesh Colors is zero to 100.

**Reset:** This resets all settings to the original default settings.

## Using Filters

Perfect Effects has its own image-processing engine. This allows you to control the settings for many filters down to the smallest detail.

There are 23 Filters that do all the work in Perfect Effects. Stacking and blending these filters will create different effects. These filters are accessed in the Filter Options pane or the Browser

The Filters are:

- Adjustable Gradient
- Adjustment Brush
- Antique
- Black and White
- Bleach Bypass
- Blur
- Borders
- Color Enhancer
- Cross Process
- Dynamic Contrast
- Glow
- Grunge
- HDR Look
- Lens Blur
- Photo Filter
- Portrait Enhancer
- Sharpening
- Split Tone
- Sunshine
- Texturizer
- Tone Enhancer
- Vignette
- Vintage



### Adjustable Gradient

Adjustable Gradient makes it fast to add common adjustments to a portion of the image. Adding the Adjustable Gradient will automatically activate the Masking Bug. This is used when you want to apply a custom filter to a particular area of an image.

- **Preset Icons:** Shortcuts to the most popular presets.
- **Presets:** Pop-up that lists all built-in presets for the filter.
- **Brightness:** Adjusts the overall brightness of the image.
- **Contrast:** Adjusts the overall contrast of the image.
- **Compression:** Compresses the tonal scale to reveal highlights and detail.
- **Detail:** Enhances the details by increasing the micro contrast.
- **Warmth:** Makes the image warmer or cooler.
- **Vibrance:** Controls the vibrance or saturated the colors appear.
- **Glow:** Adjusts the image glow.
- **Type:** Sets the style or blending for the glow.

Reset will return the settings to the default.



## Adjustment Brush

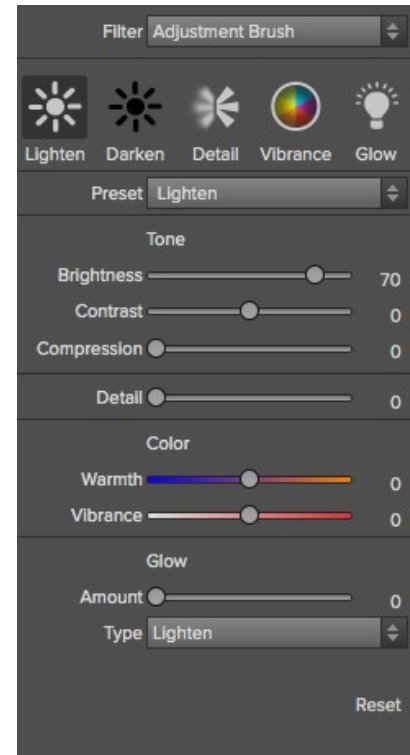
The Adjustment Brush filter lets you paint-in common adjustments just where you need them.

- **Preset Icons:** Shortcuts to the most popular presets.
- **Presets:** Pop-up that lists all built-in presets for the filter.
- **Brightness:** Adjusts the overall brightness of the image.
- **Contrast:** Adjusts the overall contrast of the image.
- **Compression:** Compresses the tonal scale to reveal highlights and detail.
- **Detail:** Enhances the details by increasing the micro contrast.
- **Warmth:** Makes the image warmer or cooler.
- **Vibrance:** Controls the vibrance or saturated the colors appear.
- **Glow:** Adjusts the image glow.
- **Type:** Sets the style or blending for the glow.  
Reset will return the settings to the default.

Reset will return the settings to the default.



When you add an Adjustment Brush, nothing appears on your image until you paint it in where you want.

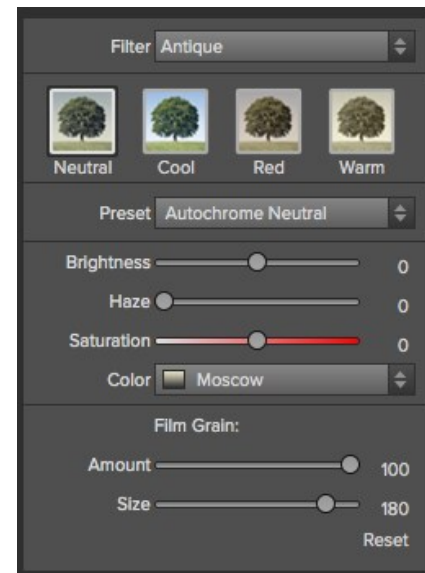


## Antique

To give your image an aged look, older than the vintage filter, monochromatic or hand colored.

- **Preset Icons:** Shortcuts to the most popular presets.
- **Presets:** Pop-up that lists all built-in presets for the filter.
- **Brightness:** Adjusts the overall brightness of the image.
- **Haze:** Adds haze or white fill to the image.
- **Saturation:** Adjusts the color saturation.
- **Color:** Drop down menu displays a list of color options similar to the duotone filter.
- **Film Grain:** Amount controls the strength and size dictates the how large the grain appears.

Reset will return the settings to the default.

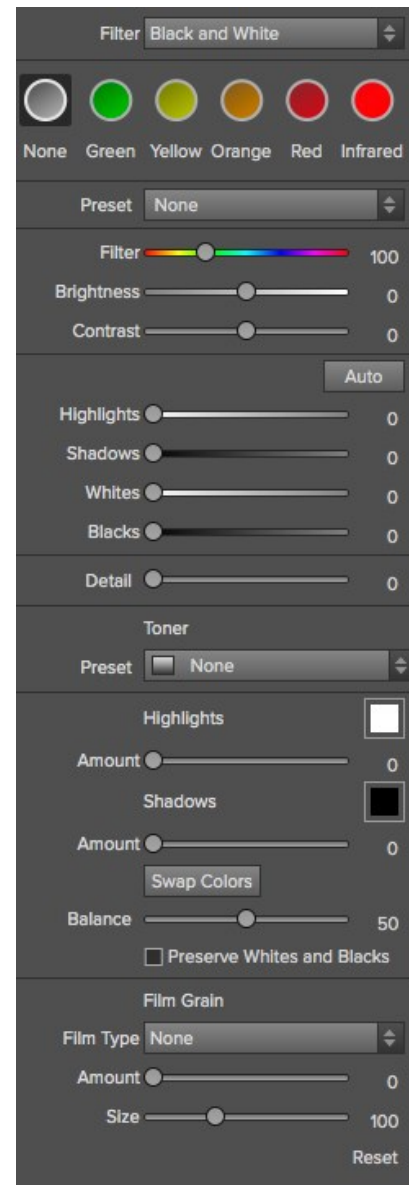


## Black and White

The black and white effect is used to turn a color image into a monochromatic image.

- **Preset:** A preset menu drop down full of popular looks.
- **Filter:** Simulates placing a colored filter over your lens when photographing with black and white film. It works like a channel mixer, choosing the percentage of each channel to use.
- **Brightness:** Adjusts the overall brightness of the image.
- **Contrast:** Adjusts the overall contrast of the image.
- **Auto:** Selects the Black and White points automatically.
- **Highlights:** This slider darkens the highlights recovering detail.
- **Shadows:** This slider lightens the shadows revealing detail.
- **Whites:** This slider adds more contrast to the whites.
- **Blacks:** Adds more contrast to the blacks.
- **Detail:** Enhances the fine details.
- **Toner:** A drop-down list of darkroom toners which add a subtle color tint to the image.
- **Highlights:** Click on the color square to select the highlight toner color. The Amount slider controls the strength of the toner color on the highlights.
- **Shadows:** Click on the color square to select the shadow toner color. The Amount slider controls the strength of the toner color on the shadows.
- **Swap Colors:** Pressing this button swaps the highlight and shadow colors.
- **Preserve Whites and Blacks:** When on, this checkbox keeps the pure whites and blacks neutral instead of taking on the color of the toner.
- **Film Grain:** A drop-down list of Film Grains from popular black and white films. Amount slider is for controlling the strength. Size slider adjust the scale of the grain.

Reset will return the settings to the default.

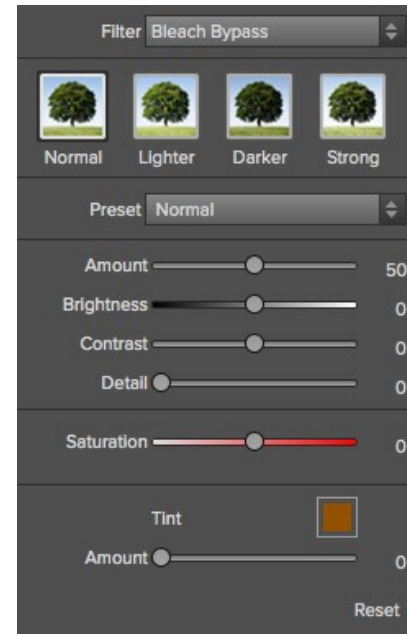


## Bleach Bypass

An old color processing technique when the bleaching step was skipped. It reduces the saturation and increases the contrast.

- **Preset Icons:** Shortcuts to the most popular presets.
- **Presets:** Pop-up that lists all built-in presets for the filter.
- **Amount:** Controls the strength or amount of the bleach bypass appearance.
- **Brightness:** Adjusts the overall brightness of the image.
- **Contrast:** Increases or decreases the global contrast.
- **Detail:** Enhances the details by increasing the micro contrast.
- **Saturation:** Adjusts the underlying saturation.
- **Tint:** Choose a new color by clicking in the color icon.
- **Amount:** Adjust the strength of the tint.

Reset will return the settings to the default.

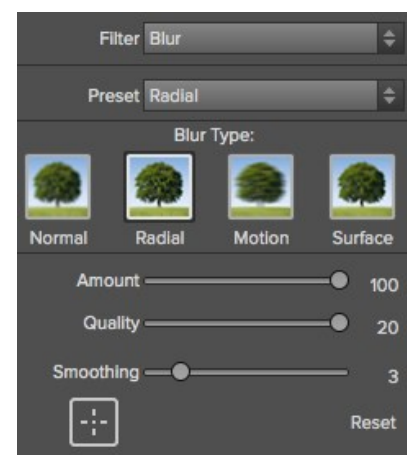
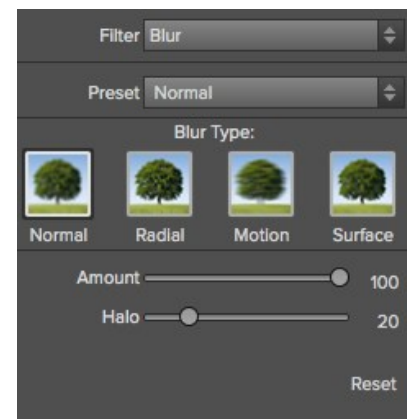


## Blur

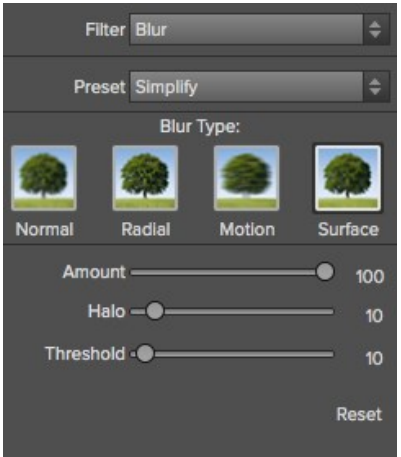
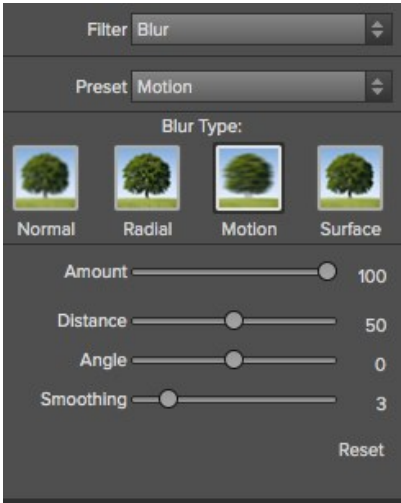
The blur filter contains four options for blurring the image. These options are Normal, Radial, Motion and Surface. Each Type of blur has its own individual sliders. Use the Preset drop down menu or click on the Type Icon to select the blur.

- **Normal:** A gaussian blur applied to the entire image. Amount slider controls the strength of the blur. Halo slider controls the fuzziness of the radius.
- **Radial:** A zoom from center style. Amount controls the strength of the blur. Quality controls how noisy or the graininess of the blur. Smoothing softens the lines created by the motion. The Radial option also includes a center spot selector. Activate the spot selector by clicking on the icon and then click on the part of the image you want to make the center of the radial blur.
- **Motion:** A motion look to make the object or camera appear to be moving. Amount controls the strength of the blur. Distance controls the blur relative to area between the subject and camera. Angle sets the angle of the blur. Smoothing softens the lines created by the motion. \*The Shake preset is a motion type.
- **Surface:** Simply maintains the edges but adds blur to the details. Amount slider controls the strength of the blur. Halo slider controls the fuzziness of the radius. Threshold sets how similar colors are grouped.

Reset will return the settings to the default.





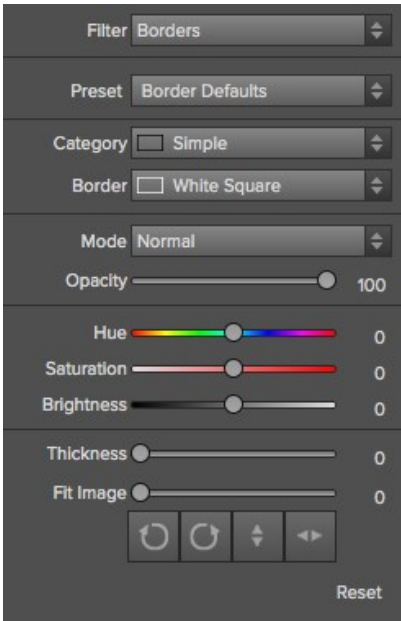


### Borders

Adds authentic looking borders.

- **Preset:** Drop down menu of popular borders.
- **Category:** Sets the category.
- **Border:** Selects which border to add.
- **Mode:** Sets the blending mode for the border.
- **Opacity:** Sets the strength or opacity.
- **Hue:** Sets the hue of the border.
- **Saturation:** Sets the saturation of the border.
- **Brightness:** Sets the brightness of the border.
- **Thickness:** Sets the thickness of the border.
- **Fit Image:** Adjusts the size of the image under the border.
- **Button icons (right to left):** Rotate clockwise 90 degrees, rotate counterclockwise 90 degrees, flip vertically, flip horizontally.

Reset will return the settings to the default.

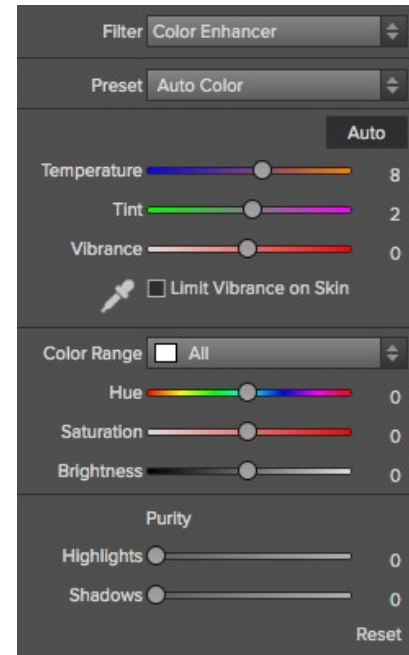


## Color Enhancer

The color enhancer can be used to control the saturation or vibrancy of colors in the image. This can be done on a global basis (All) or per a range of colors.

- **Presets:** Pop-up that lists all built-in presets for the filter.
- **Auto:** Detects and removes a color cast.
- **Temperature:** Adjusts the warmth of the image.
- **Tint:** Shifts the hue between green and magenta.
- **Vibrance:** Adjusts the vibrance of muted colors.
- **Gray dropper:** Manually select a gray area to set the temperature and tint sliders automatically.
- **Limit Vibrance on Skin box:** When checked will protect flesh tones.
- **Color Range:** Selects which color range to adjust.
- **Hue:** Changes the hue for the selected color range.
- **Saturation:** Adjusts the saturation of the selected color range.
- **Brightness:** Adjusts the brightness of the selected color range.
- **Purity - Highlights:** Reduces the saturation in the highlights.
- **Purity - Shadows:** Reduces the saturation in the shadows.

Reset will return the settings to the default.

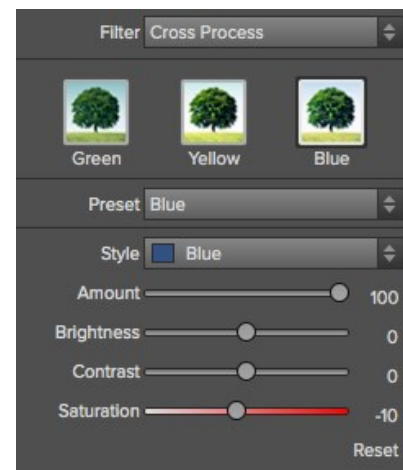


## Cross Process

This filter simulates processing film deliberately with the incorrect chemistry. This process will create unnatural colors and high contrast.

- **Preset Icons:** Quick automation of popular cross processes.
- **Presets:** A drop-down menu with a selection of cross process presets.
- **Styles:** A drop down list of all color styles.
- **Amount:** Controls the overall strength of the filter.
- **Brightness:** Adjusts the overall brightness.
- **Contrast:** Adjusts the overall contrast.
- **Saturation:** Adjusts the underlining saturation.

Reset will return the settings to the default.

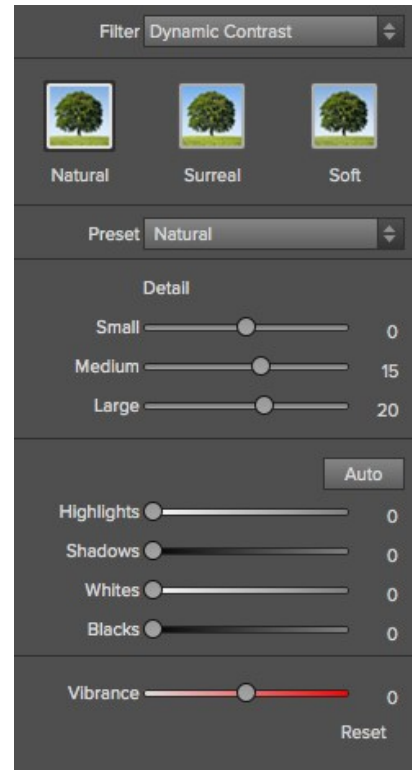


Dynamic Contrast

Dynamic contrast adds clarity or tonal contrast to your image making the image pop.

- **Preset Icons:** Presets for quick adjustments.
- **Preset:** A drop-down menu with a fill list of dynamic contrast presets.
- **Detail Small:** Adjusts contrast in small areas.
- **Detail Medium:** Adjusts contrast in medium areas.
- **Detail Large:** Adjusts the contrast in large areas.
- **Auto:** Sets the black and white points automatically.
- **Highlights:** Recovers detail in the highlights.
- **Shadows:** Recovers detail in the shadows.
- **Whites:** Increases the white contrast.
- **Blacks:** Increases the black contrast.
- **Vibrance:** Adjusts the vibrance of muted colors.

Reset will return the settings to the default.

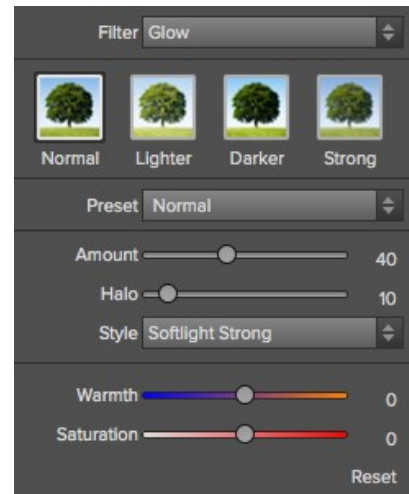


Glow

This filter adds a soft focus glow to the image.

- **Preset Icons:** Presets for quick adjustments.
- **Preset:** A drop-down menu with a list of glow presets.
- **Amount:** Controls the overall strength of the glow.
- **Halo:** Sets the fuzziness or radius of the glow.
- **Style:** A drop-down menu to set the style or blending.
- **Warmth:** Controls the temperature of the glow.
- **Saturation:** Adjusts the saturation of the image.

Reset will return the settings to the default.

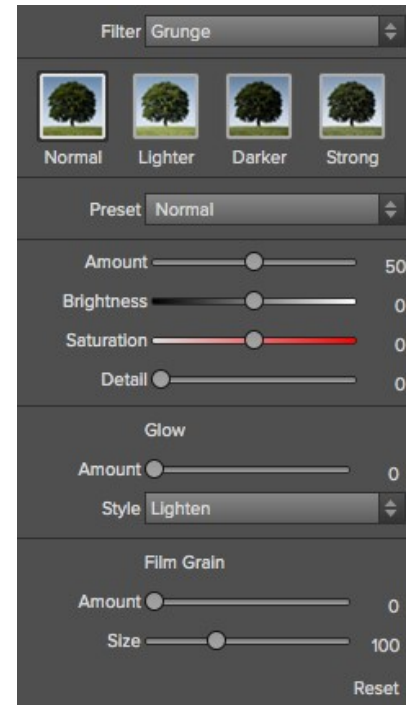


## Grunge

This filter is used to add a dirty or grungy look to your image. Its great for urban exploration or even senior portraits.

- **Preset Icons:** Presets for quick adjustments.
- **Preset:** A drop-down menu with a list of grunge presets.
- **Amount:** Adjusts the overall strength of the grunge.
- **Brightness:** Adjusts the overall brightness of the image.
- **Saturation:** Adjusts the underlying saturation.
- **Detail:** Adjusts the amount of detail.
- **Glow Amount:** Adds a glow to the grunge.
- **Glow Style:** A drop-down of glow styles or blending.
- **Film Grain Amount:** Adds film grain to the image.
- **Film Grain Size:** Controls the grain size.

Reset will return the settings to the default.

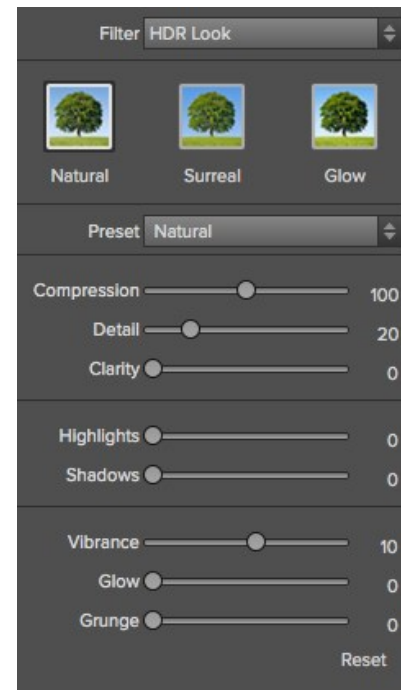


## HDR Look

This filter recreates the HDR style of tone mapping.

- **Preset Icons:** Presets for a quick adjustment.
- **Preset:** A drop-down menu with a list of HDR presets.
- **Compression:** Compresses the tone to reveal highlight and shadow detail.
- **Detail:** Increases the local contrast.
- **Clarity:** Increases the global contrast.
- **Highlights:** Recovers detail in the highlights.
- **Shadows:** Recovers detail in the shadows.
- **Vibrance:** Adjusts the vibrance of muted colors.
- **Glow:** Adds a bright glow.
- **Grunge:** Adds a dark gritty look.

Reset will return the settings to the default.

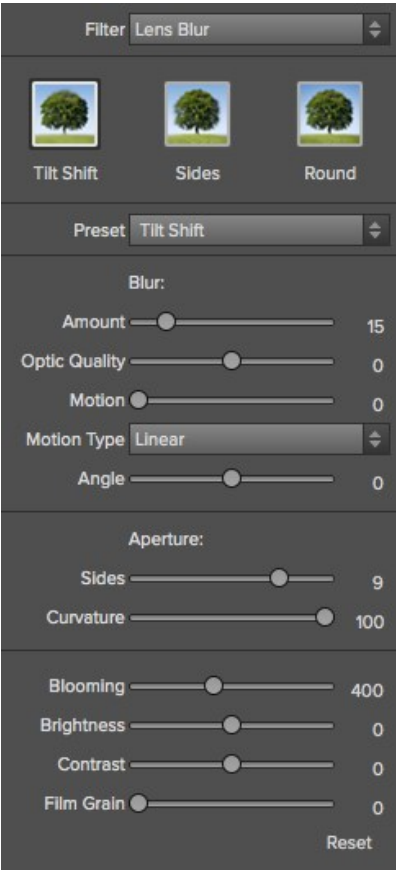


Lens Blur

This filter is the replacement for FocalPoint. It creates a blur, based on a camera lens such as a tilt-shift or a shallow depth of field look.

- **Preset Icons:** Presets for a quick adjustment.
- **Amount:** Adjusts the overall strength of the blur.
- **Optic Quality:** Controls the aperture shape in the inner and outer feather.
- **Motion:** Adds motion to the blur.
- **Motion Type:** A drop-down for selecting a motion type.
- **Angle:** Sets the direction of the motion blur.
- **Sides:** Sets the number of blades in the lens aperture changing the shape of the bokeh.
- **Curvature:** Sets the curvature of the aperture blades.
- **Blooming:** Adjusts the highlight bokeh.
- **Brightness:** Controls the overall brightness of the blur.
- **Contrast:** Controls the contrast of the blurred areas.
- **Film Grain:** Adds simulated film grain to the blurred areas.

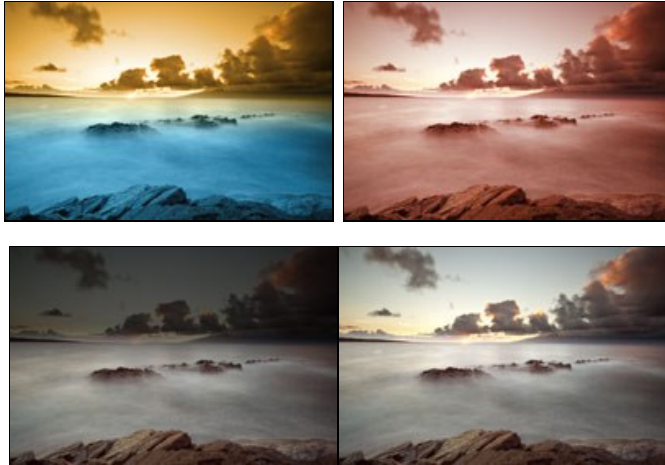
Reset will return the settings to the default.



## Photo Filter

This filter recreates solid color filters like warming and cooling. It also creates gradient filters like neutral density and bicolor filters. Bicolor filters are different colors on each side of a divide. Each filter offers different options.

Below are examples of these types of filters.



Here are the filter options:

- **Filter:** A drop-down menu with filter presets.
- **Filter Icons:** Sets the filter type; Solid, graduated or bi-color, center.
- **Colors:** Color wells for setting the filter color.
- **Strength:** Sets the strength, or opacity of the filter.
- **Saturation:** Adjusts the saturation of the underlying image.
- **Polarizer:** Adjusts the saturation of the underlying image.
- **Mode:** Sets the blending mode.

Graduated and Bi-Color

- **Presets:** Selects the filter position on the image.
- **Distance:** Adjusts the edge of the filter position.
- **Rotation:** Adjusts the filter rotation or angle.
- **Transition:** Adjusts the hardness of the feather.

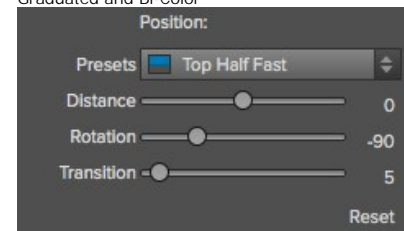
Center

- **Transition:** Adjusts the hardness of the feather.
- **Size:** Adjusts the size of the center spot.
- **In/Out:** Inverts the filter.

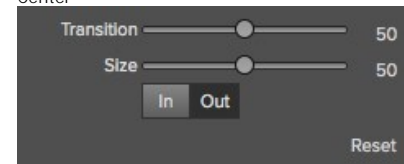
Reset will return the settings to the default.



Graduated and Bi-Color



Center

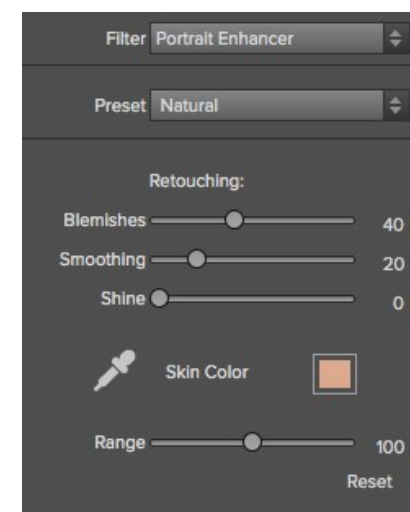


## Portrait Enhancer

The Portrait Enhancer is used to reduce blemishes, smooth skin and reduce shine on skin.

- **Preset:** Presets for quick adjustments.
- **Blemishes:** Adjusts the strength of acnes, pores and fine lines.
- **Smoothing:** Adjusts the strength of smoothing similar to makeup foundation.
- **Shine:** Adjusts the strength of the skin shine.
- **Skin Color:** Use the Color Dropper icon to select the skin color. Click the icon to activate it and single click again on the color of the skin in the image.
- **Color Well:** This will display the color you have chosen, if you click on the box it will bring up a color picker.
- **Range:** Adjusts the precision of the color selected.

Reset will return the settings to the default.

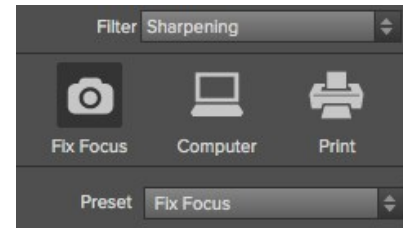


## Sharpening

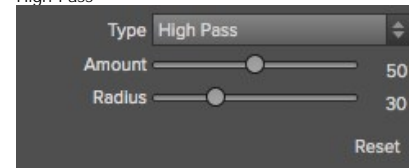
The sharpening filter adds a touch of sharpness to compensate for a moving subject, out of focus camera or for an illustrative effect.

- **Preset Icons:** Presets for quick adjustments.
- **Preset:** A drop-down menu of Presets.
- **Type:** A drop-down menu of the sharpening types. High-Pass, Progressive and Unsharp Mask. Each sharpening method has its own set of sliders.
- **Amount:** Controls the overall strength of the sharpening.
- **Radius:** Sets the radius of the sharpening.
- **Detail:** Controls the small details.
- **Protection:** Protects tonal areas such as skies.

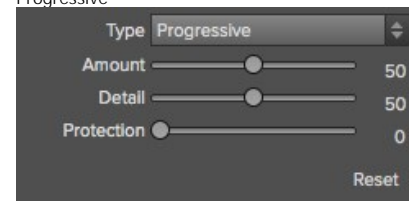
Reset will return the settings to the default.



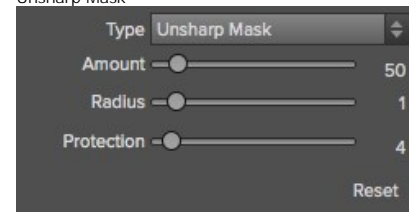
High-Pass



Progressive



Unsharp Mask

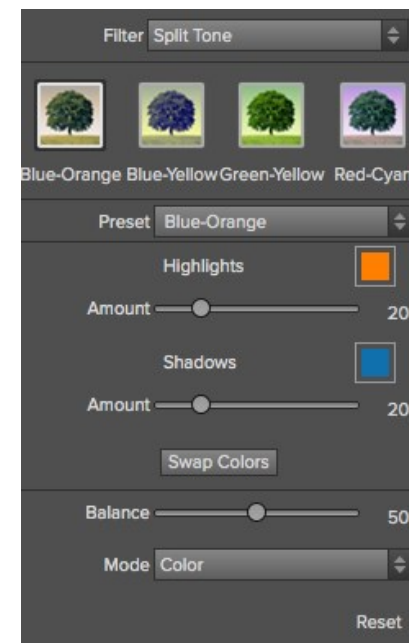


## Split Tone

This filter was formally known as Duotone. It is a gradient map that tints the dark and light portions of the image in different hues. This is used to age an image and give it an antique or vintage look.

- **Preset Icons:** Preset for quick adjustments.
- **Preset:** A drop-down menu of all Split Tone presets.
- **Highlights Color:** Use the Color Well icon to launch the color picker.
- **Highlights Amount:** Controls the strength of the color selected on the highlights.
- **Shadows Color:** Use the Color Well icon to launch the color picker.
- **Shadows Amount:** Controls the strength of the color in selected on the shadows.
- **Swap Colors:** Swaps the Highlight and Shadow colors.
- **Balance:** Adjusts the balance between the shadow and highlight colors.
- **Mode:** Sets the blending mode for the split tone.

Reset will return the settings to the default.

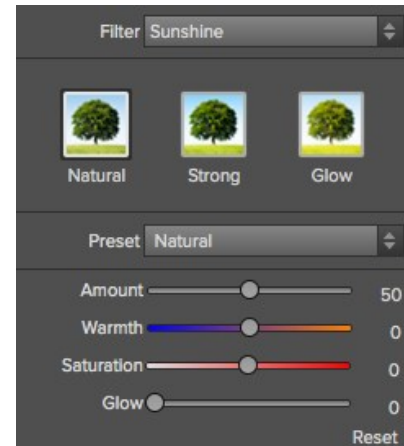


## Sunshine

This Filter increases the appearance of sunshine. It makes a flat cloudy day more vivid.

- **Preset Icons:** Presets for quick adjustments.
- **Preset:** A drop-down menu of all the Sunshine presets.
- **Amount:** Controls the overall strength of the Sunshine.
- **Warmth:** Adjusts the temperature.
- **Saturation:** Adjusts the the vibrance or saturation.
- **Glow:** Adds a bright glow to the image.

Reset will return all the settings to the default.

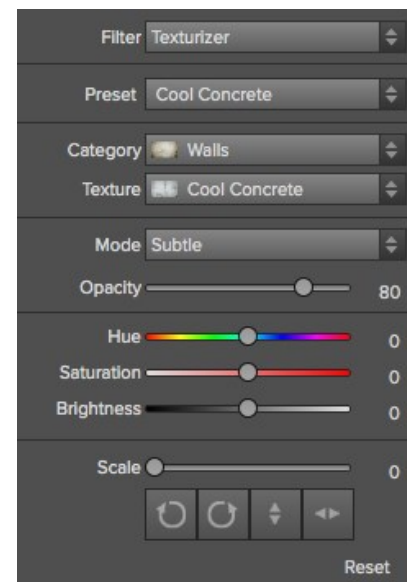


## Texturizer

This filter places a texture over the image to add a stylized look. When loading a texture file, it will be rotated automatically to match the orientation of the destination image layer. The user can override the rotation with the rotate and flip tools.

- **Preset:** A drop-down menu of all the Texture presets.
- **Category:** Sets the category.
- **Texture:** Selects the specific texture type.
- **Mode:** Sets the blending mode for the texture.
- **Opacity:** Sets the strength or opacity.
- **Hue:** Adjusts the Hue of the texture.
- **Saturation:** Controls the saturation of the texture.
- **Brightness:** Adjusts the brightness of the texture.
- **Scale:** Changes the size of the texture.
- **Rotate & Flip Icons:** Rotates or flips the texture.

Reset will return all the setting to the default.



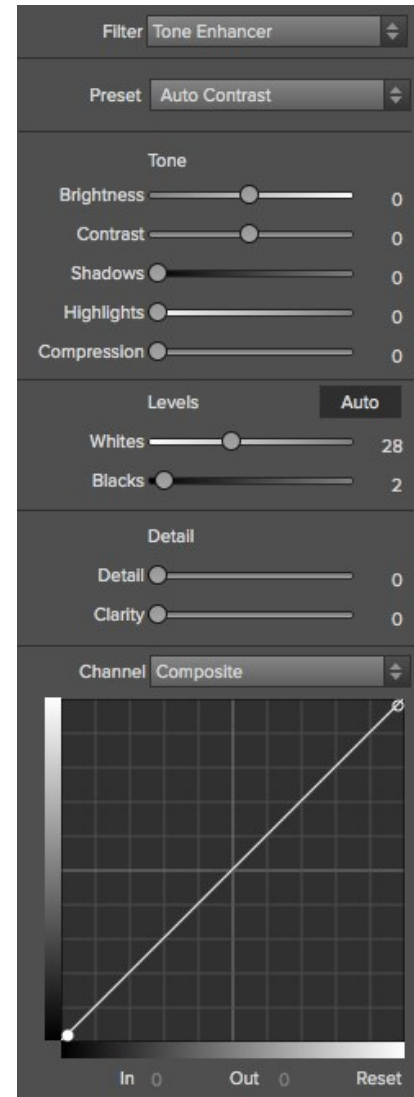


## Tone Enhancer

The tone enhancer controls the brightness and contrast, or tone of the image.

- **Preset:** A drop-down menu of all the Tone Enhancer Presets.
- **Brightness:** Adjusts the global brightness.
- **Contrast:** Adjusts the global contrast.
- **Shadows:** Lightens the shadows to recover detail.
- **Highlights:** Darkens the highlights to recover overexposed areas.
- **Compression:** Compresses the tonal scale.
- **Auto:** When enabled, this sets the black and white clipping points automatically, improving the contrast range.
- **Whites:** Sets the white clipping amount.
- **Blacks:** Sets the black clipping amount.
- **Detail:** Increases the local contrast in the image.
- **Clarity:** Enhances large edges to add clarity.
- **Curves:** The curves dialog is a powerful, advanced tool for adjusting contrast and color.

Reset will return all the settings to the default.

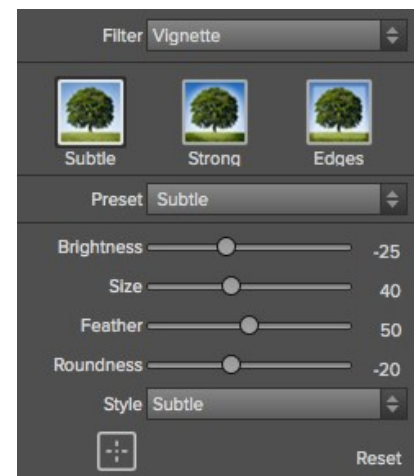


## Vignette

The vignette control allows the user to darken or lighten the edges of the image.

- **Preset Icons:** Presets for quick adjustments.
- **Presets:** A drop-down menu of all the Vignette presets.
- **Brightness:** Controls how light or dark the vignette is.
- **Size:** Controls the size of the midpoint of the gradient.
- **Feather:** Controls the hardness of the edge of the vignette.
- **Roundness:** Controls the shape of the vignette square to round.
- **Style:** This drop down menu will allow you to select either a normal, subtle or soft vignette.
- **Center Tool:** This tool allows you to select the center point of the vignette. Click on the tool icon to activate and then click on the area in the image you wish to make the center.

Reset will return all the setting to the default.

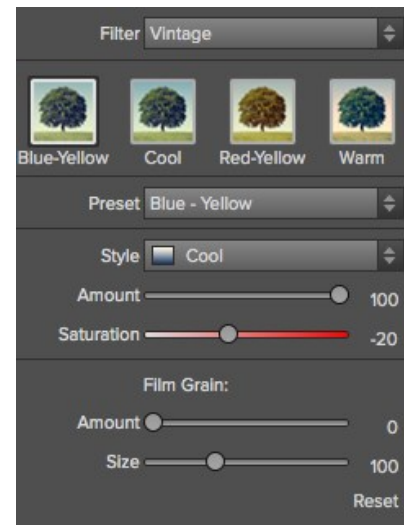


## Vintage

The vintage filter is for adding an aged, vintage look reminiscent of films and papers for the late 20th Century.

- **Preset Icons:** Presets for quick adjustments.
- **Preset:** A drop-down menu of all the Vintage presets.
- **Style:** A drop-down menu of various color styles.
- **Amount:** Controls the overall strength.
- **Saturation:** Adjusts the saturation of the original image.
- **Film Grain Amount:** Adds film grain to the image.
- **Film Grain Size:** Controls the grain size.

Reset will return all the settings to the default.



## Using the Masking Tools

Perfect Effect users can choose the Masking Brush or Masking Bug to selectively apply each filter to the image. This opens a whole new world of control for Perfect Effects. Using the Masking tools is just like using a layer mask in Photoshop to hide or reveal the filter in specific, user-defined areas of the image. The Masking tools even support pressure-sensitive Wacom tablets for the ultimate in control.

You can think of masking as painting with black paint on white paper.

A white mask reveals all the filter that the mask is attached to. An all white mask is considered blank or empty and shows all the selected filter. As you use the masking tools, you are adding black paint (Paint-Out mode). Where you paint with black you are hiding the current filter, allowing the filter(s) under it to show through. Think of it like cutting a hole in the mask. If you make a mistake, you can switch your paint color to white (Paint-In mode) and paint the filter back in like an eraser. When you paint you have more than just white or black, but any shade of gray in between depending on the opacity of the brush. Shades of gray partially hide the layer, blending the layers together.

Each filter layer in Perfect Effects has a mask automatically added to it. This allows you blend each filter differently.

There are several global masking options that can be accessed from either the masking Tool Option Bar or the Masking Menu. They affect the entire mask on the selected filter layer.

### Reset Mask

Resetting a mask returns it to all white. The entire layer is visible.

### Invert Mask

Invert swaps the white for black and black for white. What was hidden is now revealed and vice-versa. Inverting a mask can be very useful. It allows you to paint a layer in, rather than out, which is handy if you only want to work with a small area.

### Copy and Paste Mask

Perfect Effects allows you to copy the mask from one filter layer to another. This is handy if you have painted a complex mask on one layer for an adjustment and you wish to use the same mask on another layer for a different adjustment. To copy or paste a mask, use the Copy Mask and Paste Mask commands from the Masking menu.

**Visual Results**  
Color boots from bottom layer blend through upper BW layer



**Mask**  
White reveals  
Black conceals



**Upper Layer in BW**



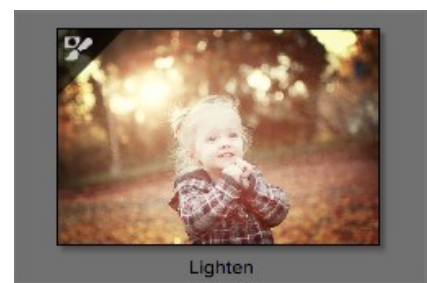
**Bottom Layer in Color**



## Paint-In Effects

Some of the filters in Perfect Effects are designed to be painted-in. When you add them to your image, you will not see the image change, but the Masking Brush will be selected automatically. Simply paint where you would like the filter to be applied.

You can identify Paint-In filters by the paint-brush icon in the upper left corner of the thumbnail. Most of the Paint-In filters are located in the Basic Brushes category.



## Mask Modes

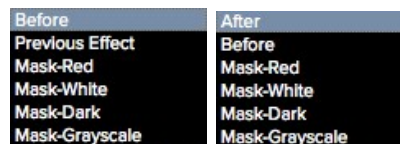
Mask Mode allows you to view your image mask in several ways.

The drop-down menu for Mask View Mode is located at the bottom of the Preview Window.



A close-up of the Mask View Modes

- **Before:** Shows the original image with no effects applied.
- **After:** Shows the image with the current effect stack applied.
- **Previous Effect:** Shows the previous effect results so you can compare just your current effect.
- **Mask-Red:** Shows the mask of the current effect layer in a red overlay.
- **Mask-White:** Shows the mask of the current effect layer in white.
- **Mask-Dark:** Shows the mask of the current effect layer in as a dark overlay.
- **Mask-Grayscale:** Shows the mask of the current effect layer in black and white.



Mask View allows you to view the mask for each effect layer that you have created with the Masking Brush and Masking Bug. You can view the mask in several modes, which are accessible from the Masking menu or from the Mask View drop-down in the bottom left of each preview pane. Below are examples of the different mask view modes. You can toggle the mask view on and off with the control (Mac OSX) or control (Windows) + M keyboard shortcut.

### Mask-Red

The masked area appears as 50% red. This is similar to the Quick Mask view in Photoshop.



### Mask-White

The masked area appears as solid white.



### Mask-Dark

The masked area appears as 90% black.



### Mask-Grayscale

The masked area appears as black. The unmasked areas appear as white. This is the same as viewing a layer mask in Photoshop.



## Using the Masking Brush



**The Masking Brush:** The Masking Brush functions like a brush tool for masking layers.

The Masking Brush is one of two tools in Perfect Effects for masking filters. When you select the Masking Brush, your tool icon changes to a circle that represents the size of the brush. It may also appear as two concentric circles (see below), indicating the inner hard edge and outer soft edge of the brush if the feather control is set above zero. There is also either a plus or minus in the center of the brush. Minus means the brush mode is set to paint-out, plus means it is set to paint-in.



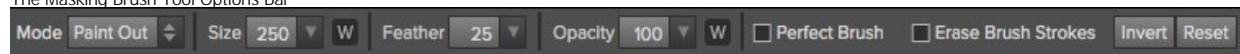
### How to use the Masking Brush

To use the Masking Brush, select it in the tool well. Make sure you are on the effect you wish to hide. Then check your brush mode and confirm it is set to Paint-Out. You are ready to mask now, simply paint on the image in the areas you wish to hide. As you brush, you will see the underlying effect(s) appear. If you make a mistake while brushing you have several options to correct them:

- First you can use the Undo command from the edit menu. This will undo the last brush stroke you created.
- You can toggle the paint mode to Paint-In and brush over your mistake.

### How to control the Masking Brush

The Masking Brush Tool Options Bar



#### Paint Mode

The paint mode controls if you are Painting-Out (hiding the effect) or Painting-In (restoring the effect). You can tell your current mode by looking at the plus or minus icon in the center of the brush. If the icon is minus, you are painting out. If the icon is a plus, you are painting-in. You can change the mode in the Tool Options Bar, or by pressing the X key, or by holding down the option (alt) key temporarily.

#### Invert Mask

Invert swaps the hidden areas for the visible areas. What was hidden is now revealed and vice-versa. Inverting a mask can be very useful. It allows you to paint a layer in, rather than out, which is handy if you only want to work with a small area. You can invert the mask by pressing the Invert button in the Tool Options Bar.

#### Reset Mask

Resetting a mask reveals the entire layer it is associated with. You can reset the mask by pressing the Reset button in the Tool Options Bar.

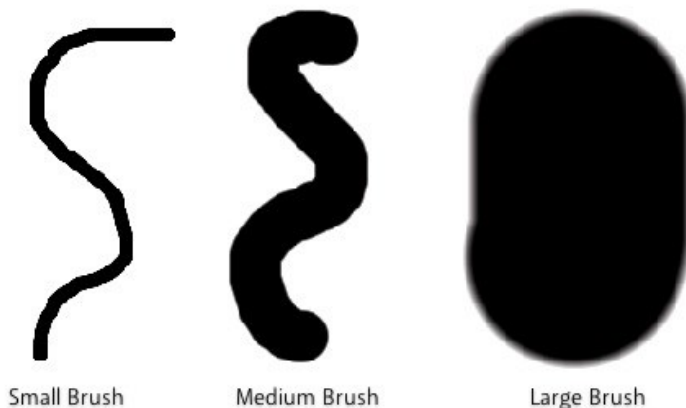
#### Erase Brush Strokes

This is a special mode used when retouching the mask created by a Masking Bug. It allows you to erase your brush strokes made with the Masking Brush while maintaining the mask from the Masking Bug.

#### Brush Size

You can control the size of the brush using the Size pop-up in the Tool Options Bar. You use a small brush at high magnification for precise work, and a large brush at fit to screen for general work. To the right, you can see examples of brush strokes at varying sizes. You can control the size of the brush several ways:

- Use the Size pop-up in the Tool Options Bar.
- Use the left and right bracket keys ( [ ] ).
- Use the mouse scroll wheel (preferences must be set to this).
- Use your Wacom pressure sensitive tablet.



Small Brush

Medium Brush

Large Brush

### Feather

You control the amount of feathering or hardness of the brush by using the Feather pop-up in the Tool Options Bar. The feather has a range from 1 to 100 percent. You use a small feather at high magnification for precise, hard-edged work and a large, soft-edged brush at fit to screen for general work. You can visually see your feather by watching the outer concentric circle of the brush tool. To the right you can see examples of different feather options. You can control the size of the brush several ways:

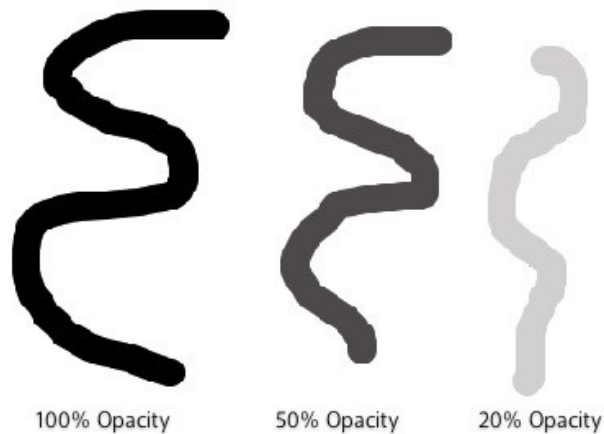
- Use the Feather pop-up in the Tool Options Bar.
- Use the shift + left and right bracket keys ( [ ] ).



### Opacity

You can control the opacity, or strength of the brush with the Opacity pop-up in the Tool Options Bar. Think of the opacity as the shade of gray you are painting with. The opacity has a range from 1 to 100 percent. You use a high opacity to paint quickly and hide large areas. You use a lower opacity for blending areas together or for subtle work. To the right you can see examples of different opacity options. You can control the size of the brush several ways:

- Use the Opacity pop-up in the Tool Options Bar.
- Use the option (Mac OSX) or alt (Windows) + 0-9 keys.
- Use your Wacom pressure sensitive tablet.



### Wacom® Controls

Perfect Layers supports pressure sensitive Wacom tablets. When you use the Masking Brush you can enable pressure sensitive controls for the brush size, brush opacity, or both simultaneously. Click on the W button next to each control in the Tool Options Bar to activate the pressure sensitive controls.

The harder you press; the greater the size or opacity will get. You can set the maximum value you want to use the Brush Size and Opacity sliders. To the right you can see examples of how pressure sensitivity can be used to control the Masking Brush.

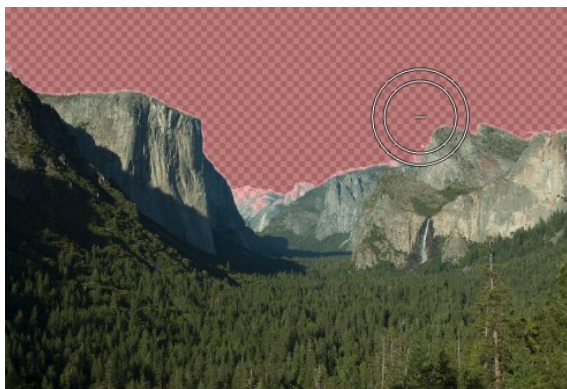


**Perfect Brush**

The Perfect Brush option enables a unique, color-based, self masking technology. When enabled, as you paint with the Masking Brush it collects the colors under the center of the brush and only masks those colors. This protects the mask from being applied across edges. A great of example of using the Perfect Brush option would be to mask a sky along a horizon of mountains.



Tip: You can turn the Perfect Brush on and off using the command or control -r keyboard shortcut. You can also temporarily lock the color to remove by holding down the control key(win) or the command key(mac). This is useful when brushing through areas with a lot of openings like tree branches.





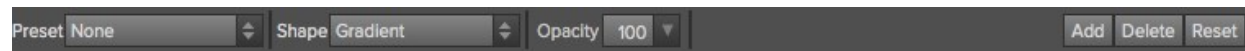
## Using the Masking Bug



**Masking Bug:** This is used for blending layers by creating Radial, gradient, and reflected gradient mask shape quickly.

The Masking Bug is perfect for tasks like darkening skies, creating vignettes and graduated filters. Learning to use the Masking Bug is fast and easy. All the adjustments made with the Masking Bug are live and readjustable until you press apply.

### Masking Bug Tool Options



The Tool Options Bar for the Masking Bug includes the options shown above and detailed here:

**Preset:** The preset pop-up includes several common ways to use the Masking Bug. These presets change the current Masking Bug to match the preset  
**Shape:** The shape pop-up controls the shape of the Masking Bug. The shapes are center, edges, gradient and reflected gradient.

**Opacity:** Sets the maximum opacity or density of the mask.

**Add:** Adds a new Masking Bug using the current settings.

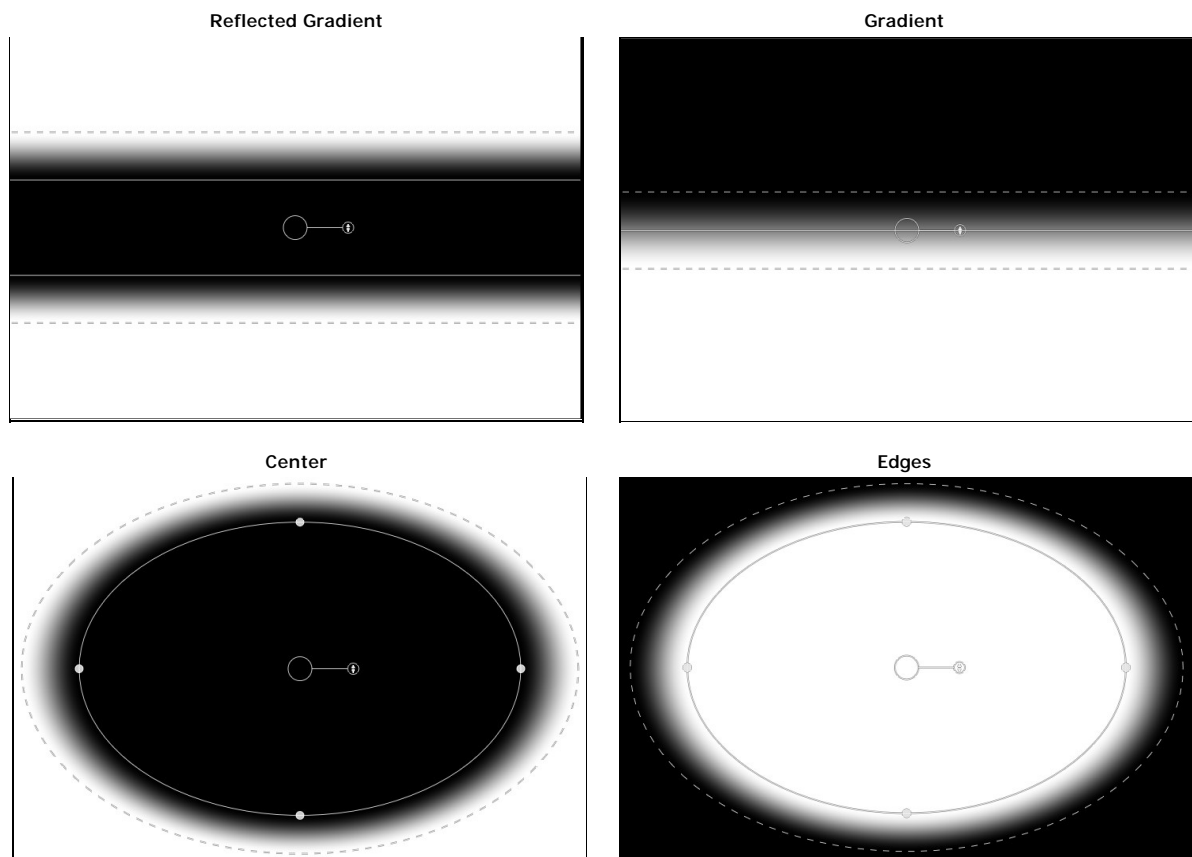
**Delete:** Deletes the current Masking Bug

**Reset:** Resets the mask on the layer completely. This removes all Masking Bugs and clears and brushing that has been done.

### Adjusting the Masking Bug

Start by adding a Masking Bug to a layer by clicking on it or pressing the Add button. Then set the Mask View mode to Mask - Grayscale. This will let you see the Masking Bug in simple black and white.

- **Move:** Click the large circle and drag.
- **Size:** Adjust the size of the masking bug by using the solid line
- **Feather:** Use the dashed line to adjust the feather or hardness of the mask.
- **Rotate:** The handle of the center circle will rotate the mask.



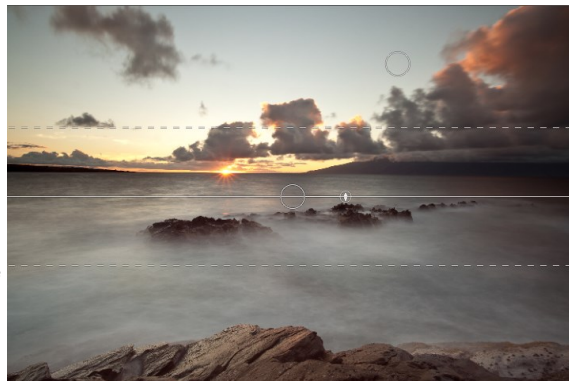


### Working with Multiple Masking Bugs

You can use up to six Masking Bugs per layer. Each Masking Bug is re-editable until you hit Apply and save your image. To add another Masking Bug, to create a complex mask shape, press the Add button or click outside of the current Masking Bug while the Masking Bug tool is selected.

Only one Masking Bug may be adjusted at a time. This is the active Masking Bug. You will see the overlay controls for the active Masking Bug while your mouse is over the preview area. Inactive Masking Bugs are marked with a small circle. You can select an inactive Masking Bug by clicking on this small circle marker.

Masking Bugs are subtractive. Each Masking Bug hides more and more of the current layer. When Masking Bugs overlay each other they may hide more of the layer too. You can always use the Masking Brush to over-ride and paint areas back in hidden by the Masking Bugs.



## Presets

Presets store the Effect Stack and all of the settings you can adjust in the the control panels on the right. Presets are a fast and easy way to get consistent results. You can save your own presets for batch processing or for simply reproducing your look when retouching.

### Using a Preset

Using a preset is simple, just click on it in the [Preset Browser](#).

### Saving a Preset

Saving a preset is simple. Once you have your settings that you wish to save, go to the Preset menu and select Save Preset.

The New Preset dialog will appear (shown to the right). There are several fields to complete including the preset name, the category, creator and description.

In the category pull-down you can select which existing category the preset should saved into. You can also create a new category this way by selecting new category from the bottom of the list.



You can edit a preset's name, creator or description by selecting it and then selecting Edit Preset Info from the Preset menu. If you want to edit the settings in a preset, load it into, make your adjustments and then re-save the preset with the same name and location.

### Deleting a Preset

You can remove a preset from Perfect Effects if you no longer want to have access to it. To remove a preset, follow these steps:

1. Open Perfect Effects.
2. Select the preset you wish to remove in the preset browser.
3. Select Delete Preset from the Preset menu.

### Importing & Sharing Presets

You can import presets you have downloaded from the onOne website using these steps.

1. Download the preset pack from the onOne website. It should have a .ONPreset extension.
2. Double-click on the preset pack, it will install the presets into a category named the same as the preset pack.

That's it, next time you use Perfect Effects the new presets will be located in the My Presets tab, in a category named after the preset pack. You can delete the files you downloaded, they have been copied into Perfect Effects.

You can share presets like you would share any other file, such as email or posting them to a website. First you need to find the preset files. The easiest way it to open Perfect Portrait, then from the Preset menu select Show Presets Folder. A Finder (Mac) or Explorer (Win) window will open and will display the presets folder. In the presets folder are sub-folders for your preset categories. Inside each sub-folder are the individual preset files, with a .ONEffects extension. You can copy these presets to another computer, attach them to an email or post them on a website.

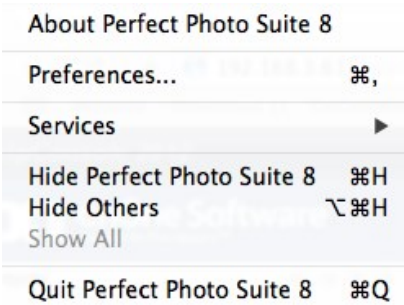
## Menus

### Perfect Effects

**About Perfect Effects:** Opens the about box. This dialog contains your serial number, version number and information on contacting onOne Software for support.

**Preferences:** Opens the preferences dialog.

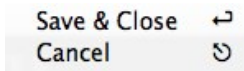
**Quit:** Quits the application.



### File

**Save & Close:** Applies the current effect Stack and options to your image and returns to the host application.

**Cancel:** Cancels Perfect Effects and returns back to the host application with no changes.



### Edit

**Undo:** Reverses the last user action.

**Redo:** Reapplies the last user action if it has been undone.

**Cut:** Cuts the current text into the clipboard.

**Copy:** Copies the current text into the clipboard.

**Paste:** Pastes the content of the clipboard.

**Reset All:** Resets all the floating palette controls back to their default settings.

**Preferences (Windows Only):** Opens the Perfect Effects preferences dialog.



### Mask

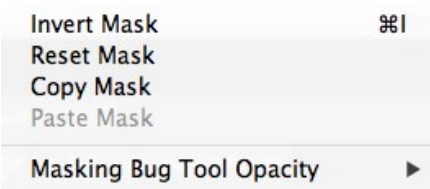
**Invert Mask:** Inverts the mask, what was hidden is revealed and vice versa.

**Reset Mask:** Resets the mask to plain white.

**Copy Mask:** Copies the mask.

**Paste Mask:** Pastes the mask.

**Masking Bug Tool Opacity:** Sets the opacity of the Masking Bug tool overlay. This has no effect on the image, just how obvious the Masking Bug tool is on screen.



## Preset

**Save Preset:** Saves the current Effect Stack as a new preset.

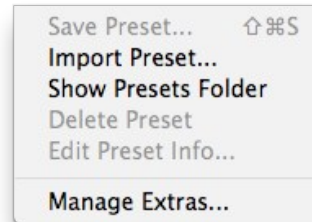
**Import Preset:** Opens the import preset dialog to help you import presets you have downloaded.

**Show Presets Folder:** Opens a Finder or Explorer window showing the presets folder.

**Delete Preset:** Deletes the current preset.

**Edit Preset Info:** Opens the preset dialog so you can edit the name, author or description information.

**Manage Extras:** Opens the Extras Manager where you can import and manage extras like Borders, Backgrounds, Textures and Presets.



## View

**Zoom In:** Zooms the preview window in one increment. This will make the preview image larger.

**Zoom Out:** Zooms the preview window out one increment. This will make the preview image smaller.

**Fit to Screen:** This sets the preview image so that the entire image is on screen at once. Think of this as an overview of the entire image. This is the setting you will use most of the time.

**Actual Pixels:** This sets the preview image so that it zooms to actual pixels or 1:1 also called 100%. This setting allows you to see every pixel in the image. This is useful when making precision adjustments.

**Show Browser Pop-up:** Enables the browser pop-up window.

**Select Filter Automatically:** This will apply the first filter in each category automatically.

**Browser Mode:** Allows the user to select how the Browser Library displays the categories.

**Show Clipping:** Shows the clipping overlay view, which over-rides the current mask view.

**Show Preview:** Toggle to enable or disable the preview.

**Preview Mode:** Allows the user to switch preview modes.

**Preview Background Color:** Toggles the background color options.

**Show Mask:** Allows the viewer to see the mask.

**Mask View Mode:** Allows the user to select the various mask modes.

Zoom In	⌘+
Zoom Out	⌘-
Fit to Screen	⌘0
Actual Pixels	⌘0
Show Browser Pop-up	
Select Filter Automatically	
Browser Mode	▶
Show Clipping	⌘J
✓ Show Preview	⌘P
Preview Mode	▶
Preview Background Color	▶
Show Mask	⌘M
Mask View Mode	▶

## Window

**Navigator/Loupe/Histogram:** Hides or shows the Navigator, Loupe/Histogram pane.

**Filter Stack:** Hides or shows the Filters Stack pane.

**Filter Options:** Hides or shows the Filter Options pane. Filter Options is only available in Advanced mode.

**Open Quick View Browser:** This toggles open your quick view browser.

**Show Browser Panel:** Hides or shows the Browser Panel.

**Show Control Panel:** Hides or shows the Control Panel.

**Hide Panels:** Hides or shows all Panels.

**Full Screen:** Toggles to and from full screen mode.

**Document Name:** Shows the name, zoom level and bit depth of the open image.

Navigator/Loupe/Histogram	⌘1
Effects Stack	⌘2
Effect Options	⌘3
Open Quick View Browser	⌘↑
✓ Show Browser Panel	⌘←
✓ Show Control Panel	⌘→
Hide Panels	→
Full Screen	⌘F
DSC_0007.jpg@23.1% 16 bit	

Help

**Search:** Mac OSX only. Searches the menus options.

**Perfect Effects Online Help:** Opens this html Help in your default web browser.

**Video Tutorials:** Opens the online Video Tutorial in your default web browser.

**Getting Started:** Opens the getting started overlay.

**Show Keyboard Shortcuts:** Opens the keyboard shortcut inspector.

**Perfect Inspiration:** Takes you to the Perfect Inspiration web site.

**Check for Updates:** Checks with the onOne update server to see if you are running the current version. If there is a newer version you will be notified and be walked through the update process.

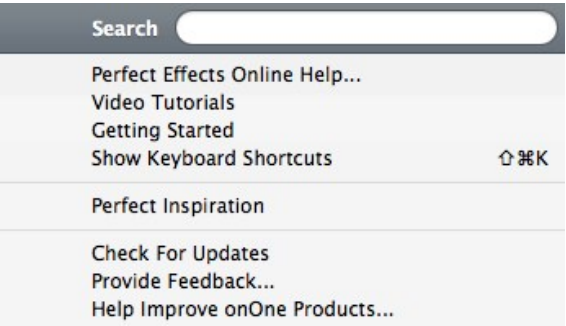
**Deactivate:** Opens the activation dialog. These are used to deactivate your software for moving it to another computer or for a return.

**Registration:** Opens the default web browser and navigates to the registration page of the onOne website.

**Provide Feedback:** Opens the default web browser and navigates to the feedback page of the onOne website.

**About Perfect Effects (Windows Only):** Opens the about box with the version number and license code displayed.

**Help Improve onOne Products:** Opens the Improve onOne Products dialog.



## Keyboard Shortcuts

Perfect Effects has many keyboard short-cuts to make it faster to access common buttons and menu items. It also uses many of the keyboard shortcuts that Photoshop uses, making it intuitive to learn. Here is a list of the most commonly used keyboard shortcuts:

Action	Mac	Win
Apply	return	return
Cancel	esc	esc
Undo	cmd z	ctl z
Redo	cmd shift z	ctl shift z
Cut	cmd x	ctl x
Copy	cmd c	ctl c
Paste	cmd v	ctl v
Invert Mask	cmd i	ctl i
Save Preset	cmd shift s	ctl shift s
Zoom In	cmd +	ctl +
Zoom Out	cmd -	ctl -
Fit to Screen	cmd 0	ctl 0
Actual Pixels	cmd opt 0	ctl alt 0
Next Browser View Mode	cmd b	ctl b
Show Clipping	opt j	alt j
Show Preview	cmd p	ctl p
Preview Modes - Single Image - Left/Right - Left/Right Split - Top/Bottom - Top/Bottom Split	cmd Y cmd L cmd opt L cmd T cmd opt T	ctl Y ctl L ctl opt L ctl T ctl opt T
Show Mask	ctl m	alt m
Navigator/Loupe/Histogram	cmd 1	ctl 1
Filter Stack	cmd 2	ctl 2
Filter Options	cmd 3	ctl 3
Show Browser Panel	cmd left arrow	ctl left arrow
Show Control Panel	cmd right arrow	ctl right arrow
Hide Panels	tab	tab
Fullscreen Mode	cmd ctl f	F11
Keyboard Shortcuts	cmd shift k	ctl shift k
Select Masking Brush	b	b
Select Masking Bug	m	m
Select Hand Tool	h	h
Select Zoom Tool	z	z
Zoom-In	cmd +	ctl +
Zoom-Out	cmd -	ctl -
Actual Pixels	cmd opt 0	ctl alt 0
Fit to Screen	cmd 0	ctl 0
Toggle Perfect Brush	cmd r	ctl r
Brush Size	larger ] smaller [	larger ] smaller [
Brush Feather	softer shift ] harder shift [	softer shift ] harder shift [
Brush Opacity	opt 1 (10%) opt 2 (20%) opt 0 (100%) etc or opt ] opt [	opt 1 (10%) opt 2 (20%) opt 0 (100%) etc or alt ] alt [
Enable or Disable Perfect Brush	cmd r	ctl r
Toggle Tool Mode	x	x

Temp Select Hand Tool	spacebar	spacebar
Temp Toggle Tool Mode	hold opt	hold ctl
Temp Toggle Clipping View	j	j
Preview on/off	cmd p	ctl p
Show Quick View Browser	cmd up	ctl up

# Index

## A

Activation 8  
Add as Layer 40  
adding effects 55  
Additional Help 5  
Address 4  
Aperture 18  
applying a preset 55

## B

Batch 18 ,15  
Bit Depth 40  
Black and White 58  
blending 55  
Blur 58  
Borders 58  
Bridge 19  
Browse 28 ,26  
Browser 28 ,35 ,52  
Browser Menu 41

## C

changing order of effect 55  
Clipping 38  
Color Enhancer 58  
Color Space 40  
Contacting 4  
Contacting onOne Software 4  
copy mask 72

## D

Deactive 8  
deleting a preset 79  
deleting an effect 55  
Directory 52  
Display 6  
Duotone 58

## E

Edit Menu 41  
Edit Copy 40  
Edit Menu 41  
Edit Original 40  
Edit with Plug-in 18  
Effect Options 58  
Effects 55  
Effects Stack 55  
eReader 3  
EXIF Data 31  
expanding a preset 55

Export 18 ,15  
External Editor 18 ,15 ,19

## F

FAQ 5  
File Browser 52  
File format 40  
File Formats 9  
File Menu 41 ,41 ,52  
Filters 58  
Finding files 29  
Folder 52  
Folders 33  
Folders 28  
Frequently Asked Questions 5

## G

Getting Started 27 ,45  
Glow 58  
GPS 31

## H

Hand Tool 37 ,47  
Help 5 ,3  
Help Menu 41  
hiding effects 55  
Histogram 38 ,48

## I

importing a preset 79  
Info 31  
Installation 7  
Interface 35  
Introduction 2  
invert mask 72  
iPhoto 19

## K

Keyboard Shortcuts 43 ,83  
Knowledge Base 5

## L

Left-Right Screen 50  
Left-Right Split Screen 50  
Legal 4  
Licensing 8  
Lightroom 15  
Loupe 38  
,48



## M

Mac OSX 6  
masking brush 72  
masking bug 72  
Masking tools 72  
Menus 41 ,  
MetaData 31  
Module Selector 11

## N

Navigator 38 ,48

## O

onOne Panel 13  
onOne Software 4  
onOne University 5  
OpenGL 6  
Opening 9  
Opening a File 40  
Opening a image 40  
Opening a picture 40  
Opening files 29

## P

paint in effects 72  
paste mask 72  
PDF 3  
Perfect Layers 11  
Phone 4  
Photo Filter 58  
Photoshop 13  
Photoshop Elements 13  
Plug-In Extras 15  
PNG 9  
presets 79  
Preview 37  
Preview window 47  
Preview Window Modes 73 ,50  
Printing 3  
PSB 9  
PSD 9

## R

RAW 9  
Recent 34  
Recent 28  
Registration 8  
reset mask 72  
Resolution 40

## S

Save As 9  
Saving 9

saving a preset 79  
sharing a preset 79  
Sharpen 58  
Single Mode Screen 50  
soom tool 47  
Sources 32 ,28  
Standalone 12  
Support 4  
Support File Types 9  
System Requirements 6

## T

Tablet 3  
Texturing 58  
The Mask Modes 73  
Thumbnail 35  
TIF 9  
Tone Enhancer 58  
Tool Well 46  
Top-Bottom Screen 50  
Top-Bottom Split Screen 50

## U

Uninstalling 7  
User Guide 26 ,1  
User Interface 46  
User Interface 28 ,45  
Using a preset 79  
Using Browse 30  
Using Modules 11  
Using Perfect Effects 51  
Using the Help System 3  
Using with Photoshop 13

## V

Video Tutorials 5  
View Menu 41  
Vignette 58

## W

Webinar 5  
welcome 44  
Welcome to Perfect Effects 44  
Window Menu 41  
Windows 6

## Z

Zoom Tool 37