

Using Perfect Photo Suite 8 with Adobe® Lightroom®



Learn three ways to access Perfect Photo Suite inside of Lightroom

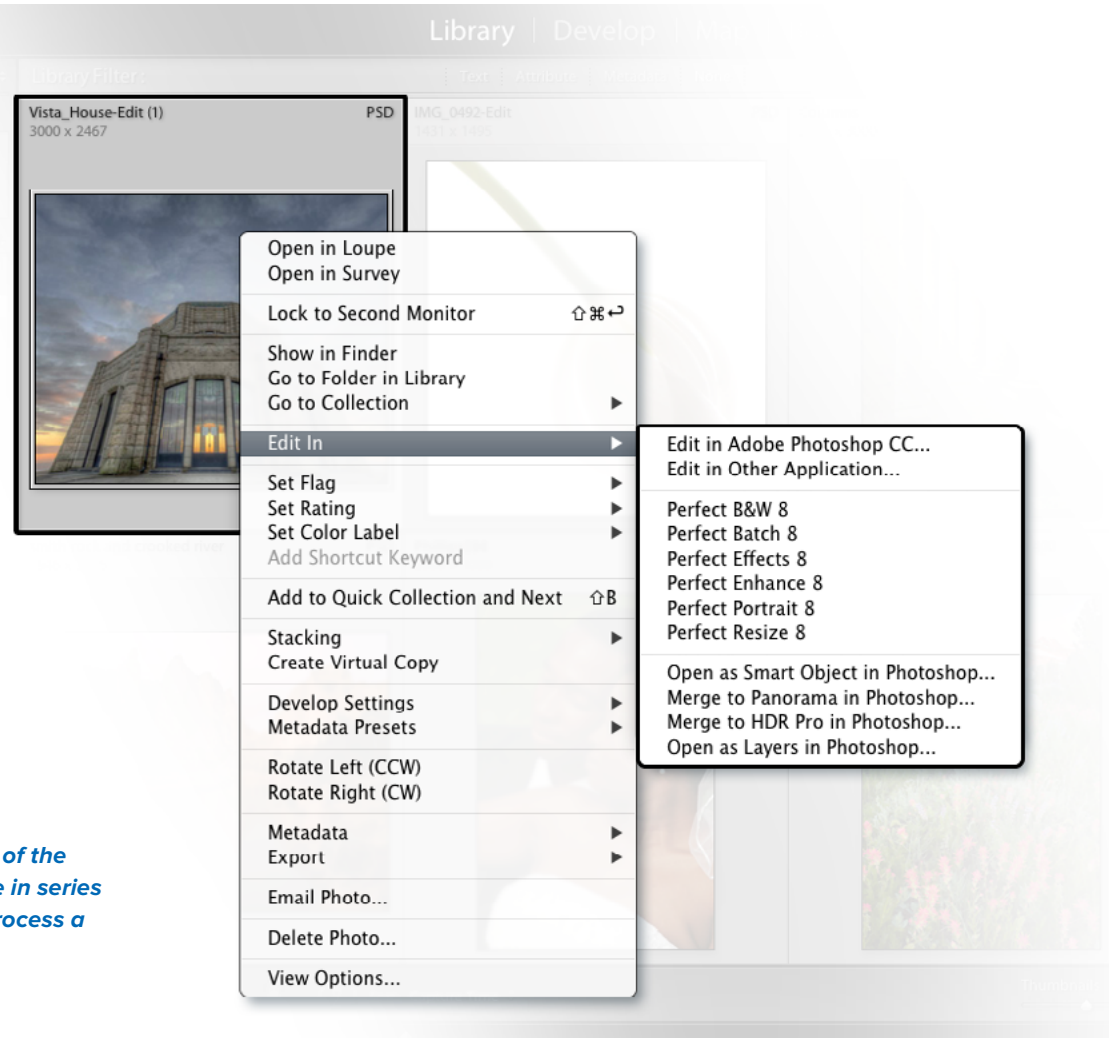
- 1 Work on a single image to add effects, retouch images, or resize for print
- 2 Work with a layered file - either to merge multiple images or create masks
- 3 Simultaneously apply the same settings to a batch of images

1 I want to add an effect, convert to black and white, retouch a portrait or resize for print a single image.

In these cases, you can access individual modules of Perfect Photo Suite from the Edit In menu in Lightroom. This is often the most convenient way to work. The Edit In menu is located in the right-click contextual menu, which is a fast and logical location. As long as you are working on single-layered files and only need access to one module at a time, this is a great way to work. It also gives you the most flexibility in file handling. You are prompted everytime how you want to handle a file; Either to access the original, or a copy, or a copy with your Lightroom adjustments applied. You also have control over what file type, color space and bit-depth you want.

You may have noticed that not all the modules of the Perfect Photo Suite are available in the Edit In menu, we will talk about why that is in just a moment.

Tip: If you have multiple files selected when you access a module of the Perfect Photo Suite from the Edit In menu, it will open each image in series so you can adjust each image individually. If you want to batch process a selection of images with the same settings, see section 3.



Using Perfect Photo Suite 8 with Adobe® Lightroom®

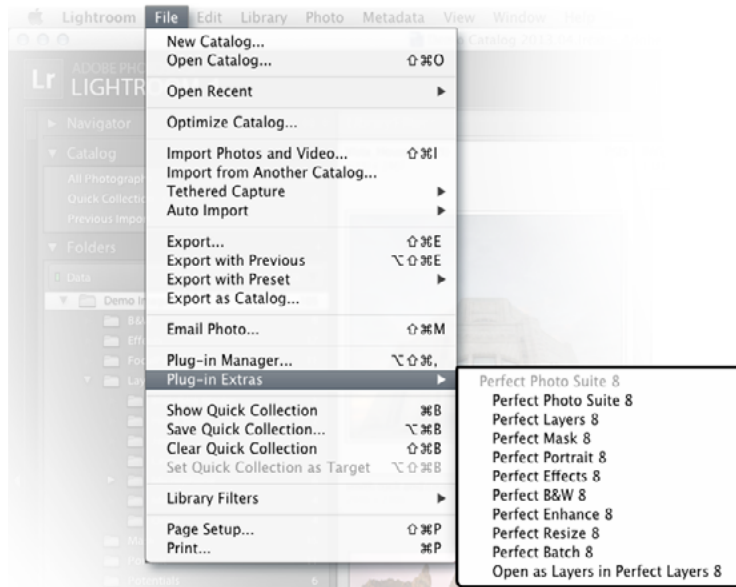


Learn three ways to access Perfect Photo Suite inside of Lightroom

- 1 Work on a single image to add effects, retouch images, or resize for print
- 2 Work with a layered file - either to merge multiple images or create masks
- 3 Simultaneously apply the same settings to a batch of images

2

I want to work with a layered file: either to merge multiple images together or create or edit masks.



Tip: If you want to select which layers to apply modules to, or if you want to use multiple modules in the same session, use this method.

In these cases you will want to access Perfect Photo Suite from the Plug-In Extras menu, located in the File menu in Lightroom. You can select any of the following options:

- Perfect Photo Suite
- Perfect Layers
- Perfect Mask

All three of these options will start in Perfect Layers. We put all the modules of the Suite there as well so you can see and access all of the modules from this location. This tells you they are installed and gives users who are new to Lightroom a single place to find all of the modules.

When you access Perfect Photo Suite from the Plug-In Extras menu, the file handling is determined by your preferences in Perfect Photo Suite. You can control the file types, bit depth, and color space — as well as rules for opening or copying original files.

If you have multiple files selected when you select Perfect Layers, Perfect Mask, or the entry labeled Perfect Photo Suite from the Plug-In Extras menu — each file will be opened in its own tab in Perfect Layers. If you select the “Open as Layers in Perfect Layers” option, they will be stacked together to create a new multi-layered file. This is handy if you want to merge files for creating a layout or masking. The largest file in your selection will be the bottom layer and sets the size of the canvas.

Using Perfect Photo Suite 8 with Adobe® Lightroom®



Learn three ways to access Perfect Photo Suite inside of Lightroom

- 1 Work on a single image to add effects, retouch images, or resize for print
- 2 Work with a layered file - either to merge multiple images or create masks
- 3 Simultaneously apply the same settings to a batch of images

3

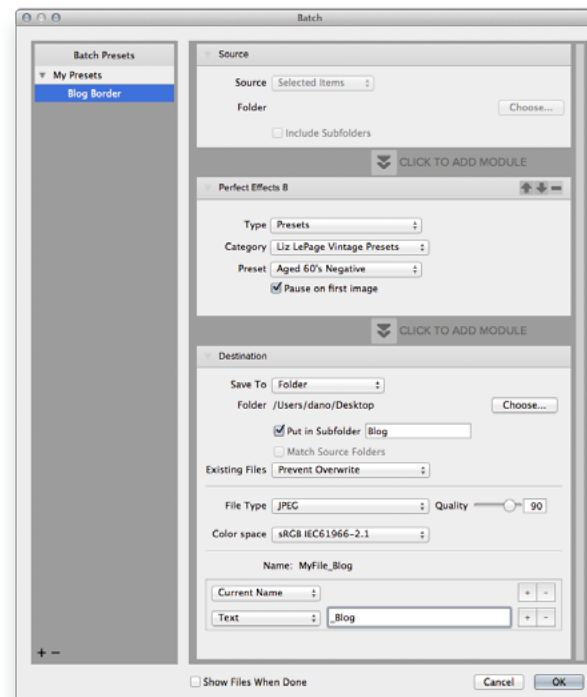
I want to apply the same settings to a batch of images at the same time.

The best way to batch process with Perfect Photo Suite and Lightroom is to use Perfect Batch. Start by selecting the images in Lightroom that will be the source images for your batch operation. This can be the contents of any view in Lightroom including a folder, collection or search results.

Then open Perfect Batch from the Plug-In Extras option in the File menu. The dialog to the right will appear. At the top is the Source, which will automatically be set to selection.

Below that is the destination. By default, Round Trip is selected. This will apply the results to your currently selected images and return them to Lightroom. If you wish to create new files and save them to a new location and not catalog in Lightroom, change the destination to Folder. Now you can control the location, naming, file-type and other options.

In between Source and Destination is a button labeled “Insert Module” Click this button to add any module of Perfect Photo Suite. In this example we have selected Perfect Effects. You can then configure what settings to use for that module. You can also use more than one module in your batch and control what order they are applied in.



- Export location
- File Naming
- File Type, Color Space, and Bit Depth
- Image Sizing
- File Naming
- Watermarking
- Preset Library

Tip: You can learn more about batch processing with Perfect Photo Suite inside of Lightroom by reading the user guide or watching the batch processing video tutorial.